

## Appendix 1

### The Family Index

#### Part One: The Ancestral Charts

The first four generations of Alperets and Cohens are presented in eight ancestral charts beginning with the patriarch and matriarch, their children and grandchildren. The seven charts that follow are arranged by the age of each family head, the children of Reuben and Soshe Esther Alperowitz.

#### Part Two: The Index

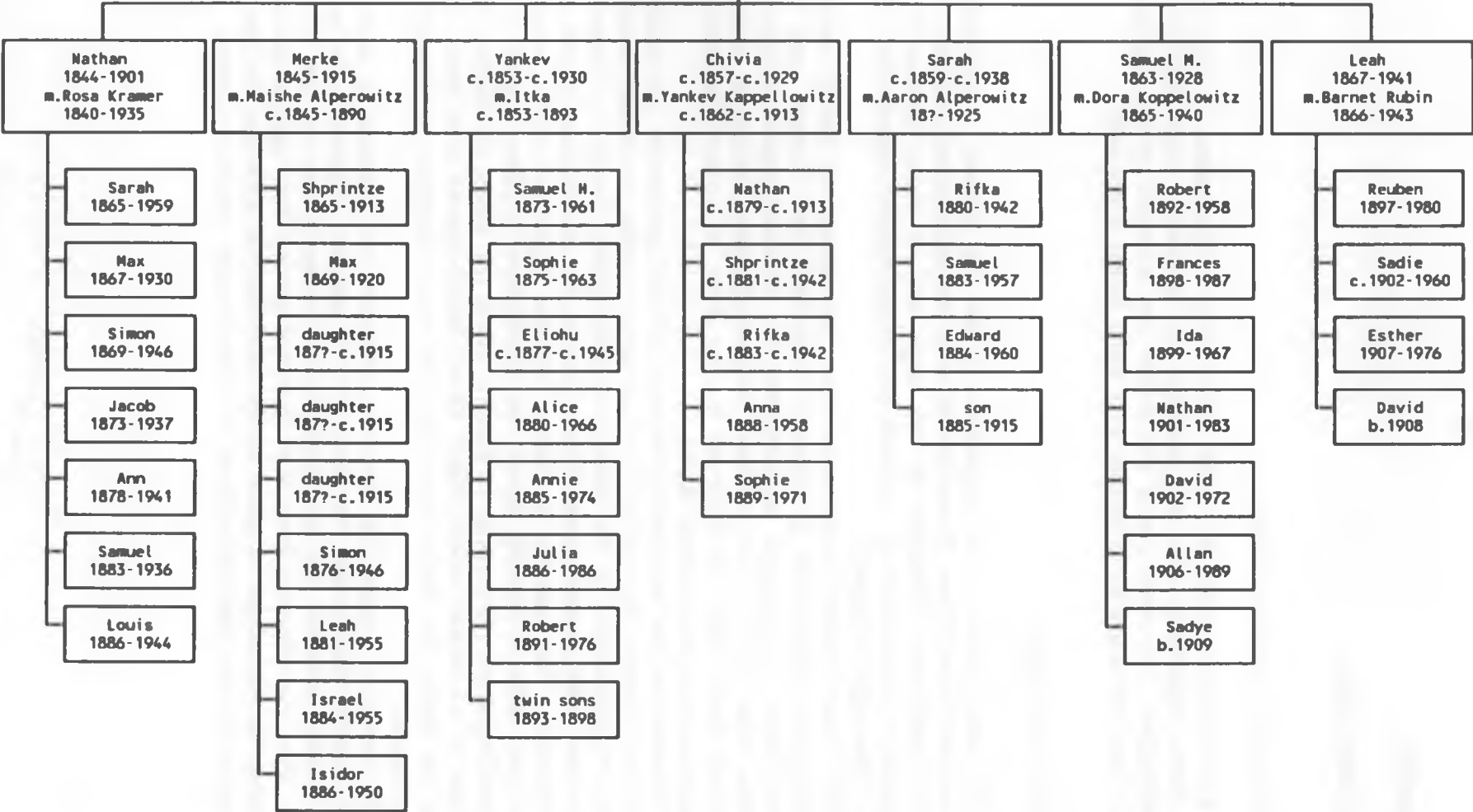
The family index is a compilation of the 662 known descendants of Reuben and Soshe Esther. It was created from the information available at the time of publication. (Because of the large size of many families it was impossible to incorporate all members on comprehensible organization charts beyond the eight included.)

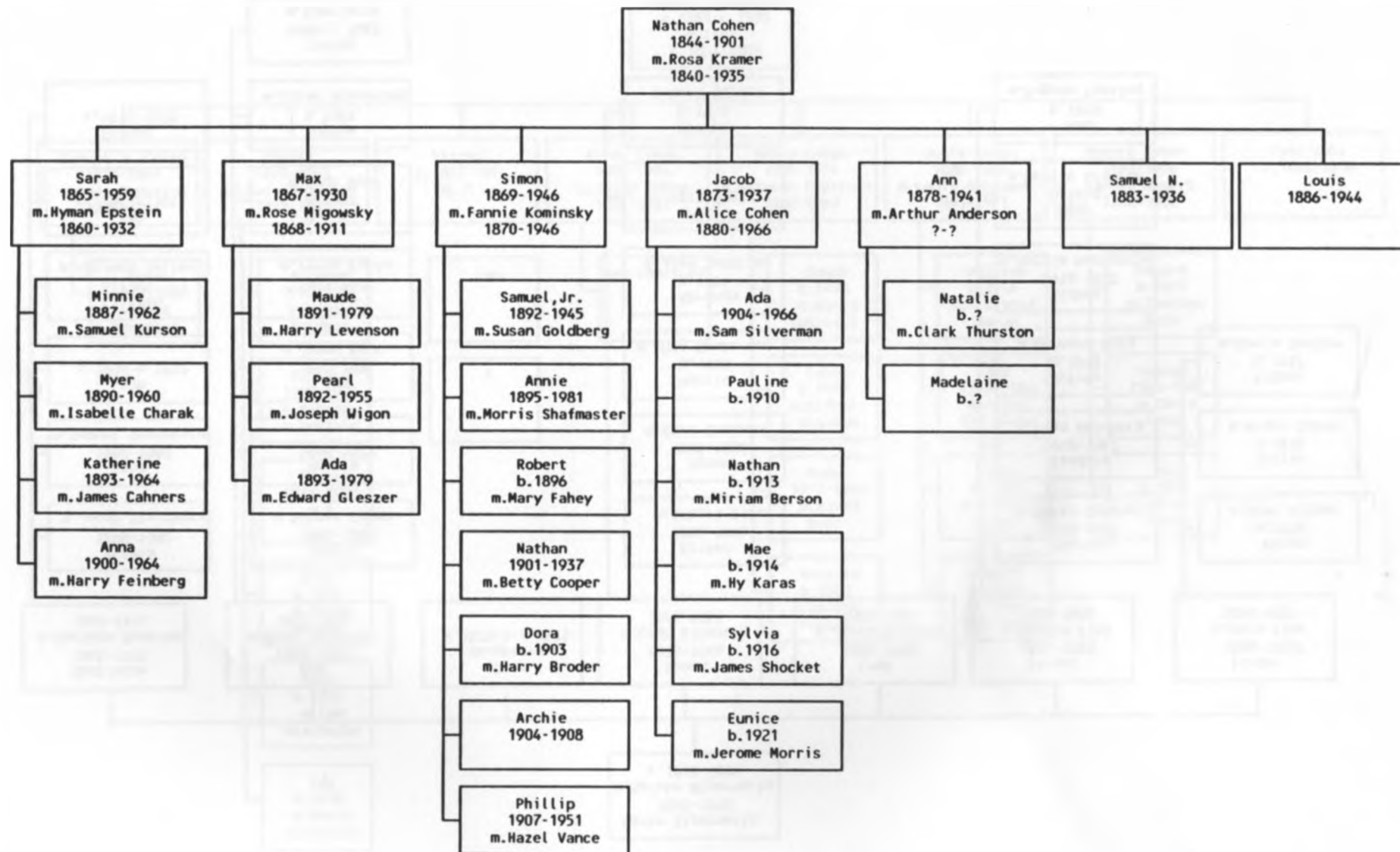
Each index record incorporates three generations of family members, including the parent and grandparent descended from Reuben and Soshe Esther. Names are arranged alphabetically by the most recent surname and personal name used in civic records. Because of space limitations, estimated birth and death dates are followed by the letter "e" rather than the circa notation used on the ancestral charts.

To determine the relationship between a fourth generation descendant or greater and Reuben Alperowitz, it is necessary to locate that family member's parent or grandparent in the index and trace his/her lineage to Reuben. (In cases where both parents descend from Reuben, the related male parent is the one recorded.) For example, my niece, Tatianna Alpert is a sixth generation Alpert: her father is Harvey Alpert, her grandfather is Sidney Alpert. To determine Tatianna's relationship to Reuben, check the listing for Sidney Alpert and that of his related parent, Isidor Alpert. Isidor's parent was Merke Alperowitz; the listing for Merke shows that she was a daughter of Reuben and Soshe Esther.

The names of spouses fall into two categories: the husband or wife of a family member that is also the parent of that couple's children is the spouse that is listed, whether that individual is the current spouse or not. In cases where there are offspring from more than one spouse, both spousal surnames are listed; the limitations of space on the chart did not allow for the first and last names of more than one spouse. All other spouses listed are current.

Reuben Alperowitz  
c.1823-c.1890  
m.Soshe Esther  
c.1823-1903





Merke Alperowitz  
1845-1915  
m. Maishe Alperowitz  
c. 1845-1890

