

# SHOFAR

SEPTEMBER - OCTOBER 2014 • ELUL 5774 | TISHREI - CHESHVAN 5775

## L'Dor v'Dor - From Generation to Generation

Rabbi Carolyn Braun

May the door of this synagogue be wide enough to receive all who hunger for love, all who are lonely for fellowship.  
 May it welcome all who have cares to unburden, thanks to express, hopes to nurture.  
 May the door of this synagogue be narrow enough to shut out pettiness and pride, envy and enmity.  
 May its threshold be no stumbling block to young or straying feet.  
 May it be too high to admit complacency, selfishness, and harshness.  
 May this synagogue be, for all who enter, the doorway to a richer and more meaningful life.

~ *The New Mahzor*, Prayer Book Press, 1998.

Doors are fascinating objects. When I began my studies in Jerusalem in 1981, knowing that we would see the diversity of cultures and countries, we were given the assignment to visit different neighborhoods and sketch their doors. There were major differences between neighborhoods. There were plain, modern doors in the new sections of town where I lived; and elaborate, colorful doors in the older parts. Some had iron grates, some had vines growing on them; some were just archways into a common patio, some were rectangular, and some were placed inside of arches. Many tempted me to see who was behind the door, drinking tea or Arabic coffee, eating *kubbeh* or knishes, worshipping Jesus, Allah, Adonai, or something else. Behind those doors were artists, business executives, hi-tech workers, grandparents and great grandparents, and many children. They were Iraqi, Russian, American, Kurdish, etc. If I'd had enough nerve, I might have knocked on many of them to find what a wonderful adventure lay inside. There were also doors that said, "do not disturb," "I'm busy," "I'm only comfortable with people I know," or "come back later." Of course, those doors also intrigued me and I wondered what story lay behind them.

Rosh Hashanah, the New Year, is also a door of sorts. What lies beyond the entrance to the building and to the sanctuary? What lies beyond the cover of the *Machzor* (prayer-book), beyond the words and letters of the prayers, beyond the Cantor's chanting and the congregational singing? What experiences wait for us when we open the door to our hearts and our minds? I suspect some of our experiences will be shared by others and other experiences will be known only to us. My prayer is that no one will feel nervous about coming through the door, and the perceived barriers will disappear.

For my Israel assignment, I was drawing a door in the Machaneh Yehuda neighborhood; actually, it wasn't really a door, but rather an enormous loofah vine over an open gate. I could see a courtyard and I could smell something yummy. As I was drawing, an older woman -- head covered, and toothless -- peeked out of the yard at me. I was nervous. I hadn't been in Israel long, I couldn't speak Hebrew well, and I was worried that she might say something to me and I couldn't answer. My first thought was to smile and walk away... fast. But something about her -- maybe her eyes -- bid me to come closer. There is more to this story, but the short of it is that I couldn't understand a word she said, but I could kind of communicate with her son. We all became friends. Over the year, I practiced my Hebrew on them and even though I would say some silly things, they were so encouraging. It must have been so strange to them to see a young woman who wanted to be a rabbi (after all, it was 1981), and an American, at that! I learned that they were from Kurdistan and that they still spoke Aramaic. I learned to love their humor, their music, and especially their food. I went to their synagogue and to their festivals. They became my family for the year and as I learned to communicate better, we were able to talk about more together. On both of our parts, the relationship took a

>> *continued on page 8*



## IN THIS ISSUE:

- 1 *L'Dor V'Dor*  
*From Generation to Generation*  
by Rabbi Braun
- 3 Welcome Cantorial Intern  
Jeffrey Warschauer
- 3 Welcome New Members
- 3 September - October  
Anniversaries
- 4 KBE School Year Begins!  
Welcome message from  
KBE Director Melanie Weiss
- 5 High Holiday Message  
from the TBE Board of  
Directors
- 5 Bat Mitzvah Kaspar Wilder
- 6 Committee News &  
Updates
- 7 Meet Your TBE Staff
- 8 Changes - Message from  
TBE's Executive Director  
Jodi Veysey
- 9 High Holiday Message  
from TBE's Ritual Committee
- 10 Thank You to Our 2013-  
2014 Annual Appeal  
Supporters
- 11 Promises to Keep - TBE's High  
Holiday Campaign 5775
- 11 TBE's Gift Shop Grand  
Reopening
- 12 High Holiday Notes & News
- 13 Birkat Yeladim  
Shabbat Halaila  
Teen Beit Midrash  
Kol Yeladim
- 14 Condolences, Todah  
Rabah, Mazel Tov
- 16 Donations & Tributes
- 18 Kever Avot Cemetery Visits
- 19 Membership Business  
Directory

## TEMPLE BETH EL'S MISSION

Our vision is to be an embracing, supportive and vibrant community which observes Judaism in the Conservative tradition and which is devoted to the perpetuation of Jewish values and culture. Temple Beth El honors the diversity of its members and is committed to their spiritual growth.



TEMPLE BETH EL

## SCHEDULE OF SERVICES

*All are welcome.*

Monday through Friday	6:50 am
Friday evening Kabbalat Shabbat service	5:30 pm
Saturday (Shabbat) and Jewish holidays	9:30 am
Sunday	9:00 am
Secular holidays	8:30 am

## EXECUTIVE COMMITTEE 2014-2015

### Leadership Team:

Irwin Gratz - Immediate Past President  
Joan Levy, Karen Lerman & Robert Aranson - Vice Presidents  
Treasurer - Irwin Gratz  
Secretary - Jodi Freedman  
At Large: Barbara Dichter

### Ex officio:

Rabbi Carolyn Braun  
Jodi Veysey

## TEMPLE BETH EL 2014-2015 BOARD OF DIRECTORS

Adam Arens	Jodi Freedman
Dauna Binder	Irwin Gratz
Jon Brier	Judy Gatchell
Barbara Dichter	Karen Lerman
Becky DeLois	Joan Levy
David Brenerman	Isabelle Cohen Johnson
Patricia Finkelstein	Katie Small
Kate Foye	Ernie Wallach

### Rabbi Carolyn Braun

Jodi Veysey, *Executive Director*  
Melanie Weiss, *Director of Kadima Beth El Religious School Program*  
Kelsie Camire, *Rabbi's Assistant*  
David Jacobs, *Events & Communications Coordinator*  
Sherri Quint, *Bookkeeper & TBE Memorial Park Administrator*  
Deena Schoenfeld, *Director of Communications & Special Programs*  
Bob Bradbury, *Custodian*

Rabbi Emeritus - Harry Z. Sky, D.D.  
Cantor Emeritus - Kurt Messerschmidt

Shofar Design & Production - Deena Schoenfeld



THE RABBINICAL  
ASSEMBLY

Please join us for  
**HIGH HOLIDAY SERVICES**

with Rabbi Carolyn Braun  
 and returning special guest  
 Cantor Rachael Littman  
 of Hebrew Union College

No tickets necessary. All are welcome!

See the High Holiday Schedule for details.

TBE welcomes  
**CANTORIAL INTERN JEFFREY WARSCHAUER**



This coming year, cantorial intern Jeffrey Warschauer will be joining Temple Beth El each month from the Jewish Theological Seminary. We are so looking forward to his energy, knowledge, and his voice!

A Founding Artistic Director of KlezKanada Institute for Yiddish/Jewish Culture and a successful musician with vast knowledge of the melodies of European Jewry, Jeff is enthusiastic about invigorating our congregation with music and *ruach* - spirit. We're excited to have him work with our Kadima Beth El students, and for him to take part in a family Shabbat HaLaila service and dinner. Jeff is already thinking about ways to incorporate even more singing into our services! Please join us in welcoming Jeff to our community.



NEW MEMBERS



David Argavani

Stephanie Cummings

Tracey Hall & Bill Burge and their daughter Kaspar Wilder

Jeffrey & Abigail Halpern and their children Rafi and Ezra

Jonathan Rakin

Jon Gelchinsky & Tara Gingerich  
 and their children Eleanor and Benjamin

MAZEL TOV  
 מזל טוב

**SEPTEMBER  
 ANNIVERSARIES**

- 1 Jay and Kim Baker
- 1 Carla Marcus and Larry Mohr
- 2 Robert and Jean Aranson
- 2 David and Betty Small
- 3 Ray and JoAnn Oransky
- 5 Justin and Samantha Lerman
- 6 Bernie and Phyllis Givertz
- 7 Jeffrey and Susie Saffer
- 18 Jeffrey and Joan Barkin
- 23 Lenny and Patti Drapeau
- 29 David and KC Stone

**OCTOBER  
 ANNIVERSARIES**

- 5 Robert and Irina Kahn
- 5 Ken and Susan Silver
- 6 Drew and Robin Stevens
- 7 Ben and Judy Bertram
- 10 Stephen and Melissa Finberg
- 10 Colin and Kate Foye
- 10 Paul and Julie Greene
- 10 Mark Kelly and Emma Schiffman Kelly
- 22 Maurice and Phyllis Cohen
- 22 Paul and Susan Trusiani
- 23 Abe and Tama Fineberg
- 23 Gregg and Pattie Garson
- 25 Stuart and Laura Piltch
- 25 Stephen and Susan Schwartz

## BRUCHIM HABA'IM - Welcome

By Melanie Weiss, Director of Kadima Beth El Religious School Program



*Bruchim HaBa'im, yeladim v'horim!* Welcome back, kids and parents! We're so excited to be gettin' back to business at Kadima Beth El. We have a wonderful first few months of school lined up.

Our regular Sunday and Wednesday classes begin again the first week of September, with an exciting new development: our youngest KBE-nikim in Morah Diana's *chaverim* class will now meet

for three hours each week, on Sunday mornings from 9-12. KBE students of all other ages are back, too, with our teens working as madrichim in the classrooms and meeting for Hebrew High once a month. Our 7<sup>th</sup> graders will start their special pre-b'nei mitzvah curriculum on September 10<sup>th</sup>. KBE is also launching a very exciting brand new Teen *Beit Midrash* learning program that will meet twice monthly on Sunday mornings, open for students in 8<sup>th</sup>-12<sup>th</sup> grade.

The very first **Kol Yeladim event** of the year is taking place on Sunday morning, September 7<sup>th</sup>, so if you know anyone with children 0-3 years old who is interested in some fun holiday programming, please let them know! For more information, email Deena Schoenfeld at [KolYeladim@TBEmaine.org](mailto:KolYeladim@TBEmaine.org).

Temple Beth El will hold **special family services for the High Holidays**. All are welcome. For more information and a detailed schedule of our High Holiday services, please see the High Holiday section of this Shofar newsletter.

We're starting our **Shabbat HaLaila** series on Friday, September 12<sup>th</sup>. Shabbat HaLaila is a special opportunity to join together with the KBE community and Temple Beth El members for Kabbalat Shabbat services and a delicious dinner! We need volunteer help for shopping, cooking and clean up for these special Shabbatot – if you're interested, please email me at [education@TBEmaine.org](mailto:education@TBEmaine.org)!

Other than our communal Shabbat, we have three special events to which your entire family is invited:

- First, we have been invited to participate in the **community-wide burial of damaged sacred books**, a fascinating ceremony that is appropriate for all ages. That will take place on Sunday, September 14<sup>th</sup> at 4:00 pm at Mt. Sinai cemetery - Hicks St., Portland.
- Next, we're once again throwing our **Pizza in the Hut meal for Sukkot!** KBE families (plus their friends!) are welcomed into the TBE sukkah at noon on Sunday, October 12<sup>th</sup>.
- Our first KBE **B'Yachad event** of the year – a full-school event to which parents and siblings are most warmly invited – will be a sing-a-long with our fabulous music teacher, Charlie Miller! Join in with KBE students on Sunday, October 26<sup>th</sup> at 11:00 am.

I could go on and on about all of the awesome things we have waiting for us this school year. If you're looking to learn more, please make sure you pick up a KBE calendar from the front lobby or my office, and make sure you're receiving the KBE weekly email. (Of course, KBE is also on Facebook at <https://www.facebook.com/KBEmaine>, and it's a great way to see what's going on!)

In order to make our year as successful as it can be, **we need your help!** KBE is always looking for volunteers, for everything from cooking and cleaning to driving, set-up, and leading monthly events. If you're interested in getting more involved, stop by a KBE committee meeting, send me an email, or check out the sign-up sheet on my door.

Looking forward to an amazing year together!

*Kol tuv* (all the best) and warmest wishes for a *Shana Tova*, a sweet and joyous New Year!  
Morah Mel ■

## A HIGH HOLIDAY MESSAGE FROM YOUR BOARD OF DIRECTORS

### *L'Shanah Tova!*

As the Jewish High Holidays approach, we enter a time of personal reflection and hope and prayer for the New Year ahead. We particularly pray for the health and welfare of our brothers and sisters in Israel.

The Temple Board and staff look forward to an exciting schedule of worship services, adult and children's programs, education, and charitable service to the community in the upcoming year. Our board has scheduled a training and planning session to prepare new Board members for their service and to look to the future of how Temple Beth El can best meet the changing needs of our members and the community at large. As Temple Beth El continues to strive to be a place where we experience lifecycle events, offer prayer, and enjoy educational and cultural programs, we must also find a way to reach out to Jews wherever they are in Southern Maine and welcome them into our congregation in different ways than we have in the past. This type of outreach will take many months, or even years, of study, planning, and discussion. At the same time, we want to understand better what our current membership desires to meet your spiritual, educational and cultural needs. We always welcome your ideas and comments in regards to what is going well, in your view, and what could be done better.

Again this year, we welcome our special guest Cantor Rachael Littman as Hazzan, leading the High Holy Day services in the main sanctuary. Cantor Littman, with her sparkling presence and beautiful voice, was a wonderful addition to our services last Rosh Hashanah and Yom Kippur, and the Board is excited that she has agreed to return.

As was the case last year, you will find open seating in the main sanctuary. All are welcome. Certain seats are reserved for those who continue to support the Temple with their additional gifts. Please observe these seat reservations where you find them. Ushers are available to assist you.

Your support through membership at TBE, along with your generosity during our Annual Appeal and other fundraising initiatives, allows our community to flourish as we continue to offer programming that attempts to meet our congregation's spiritual, cultural and educational needs, and to maintain our physical structure.

But what makes our Temple experience whole is you, our congregants. We hope to see you at the Temple. Also, please remember the holiday season continues with Sukkot and Simchat Torah so join us for these joyful occasions, as well.

May you and your family enjoy a sweet, peaceful, and fulfilling New Year.

**B'shalom -**

The Temple Beth El Board of Directors ■

## BAT MITZVAH KASPAR WILDER



Kaspar Matilda Wilder was born very early, with an APGAR 2 in Georgetown, Texas. In celebration of that auspicious occasion, she was promptly whisked away by Lifeflight on her first independent journey, to St. David's Hospital in Austin, Texas, where she resided in the NICU for the first week of her life, thus beginning a lifetime of worry for her adoring mother. She and her mother spent her first few weeks in the Our Lady of the Angels Shelter.

Kaspar grew up in central Texas, the daughter of a single school teacher, until the age of seven when she picked Bill Burge as her father exclaiming, "Look, Yma! It's my Dad! See he is just like me!" while surreptitiously looking through her mother's JDate account. She has been blessed with the most amazing volunteer family, most especially Bill and Sheila Berning, her remarkable volunteer grandparents.

Besides being an experienced horsewoman, Kaspar is a published poet, a Gold Medalist in the National Latin Exam, a member of Musica de Fila, and Sci-Fi geek. She spends her summers at Ramah in the Rockies where she and her mother helped begin their Tikvah program four years ago. Her Bat Mitzvah project is a Kickstarter Scholarship fund to help Tikvah campers return to camp a second year. When she is not writing or studying mythology, she hangs out at Mainly Frames where she helps Leo and Henri the cat keep things tidy.

Kaspar and her family celebrated her Bat Mitzvah on August 8-9 at Temple Beth El. ■

## COMMITTEE NEWS

### ADULT JEWISH LEARNING COMMITTEE NEWS -

#### Judy Gatchell, Chair

The TBE Adult Jewish Learning committee has been meeting over the summer to plan for the coming year. We are excited about possibilities that will build on our many successful offerings last year. We were happy to offer a variety of formats and topics and outstanding presenters.

For the coming year, it is our goal to continue to have programming that will appeal to our diverse congregation. We will be bringing back some of our most popular teachers with new programs and, of course, some totally new faces. We are discussing increased coordination within our TBE community and the larger Portland Jewish community.

Our committee members include Norm Wilson, Dauna Binder, Stuart Piltch and we welcome new member, Ginny Eklund. Please feel free to talk to any of us about your ideas and any feedback you may have from the programs that you have attended. Look for our program schedule early this fall. ■

### YAD L'YAD COMMITTEE - Becky Delois, Chair

Yad L'Yad has been busy this spring and into the summer. There have been a substantial number of deaths and illnesses to which we have been responding with cards and meals. We appreciate that more members of Temple Beth El are accepting meals when offered. That is why we are here and we are more than happy to brighten someone's day with a meal or a call or a visit. The more we are able to touch the hand of another, the better it is for those who need that hand and for those who give to it. Knowing we have a group of people who can make the time to give is a reminder that Temple Beth El truly cares about its congregants. And being a community that cares is infectious so that we become more interested in the welfare of us all. Kindness begets kindness.

To keep our Yad L'Yad strong, however, so that there will always be someone available to help, we want and welcome new volunteers. In fact, in order for Yad L'Yad to have a future, we really should have new volunteers join every year. And with more volunteers, we can better attend the needs of those who want a meal, a ride, a friendly visitor, etc.

Last, but very important, is an immediate need for a substitute cook who is willing to make shiva meals when Evalin Stearns, a caterer who has been involved at Temple Beth El for many years, is not available to be hired to cook them. When we cook for someone who is ill or recovering from surgery, a meal schedule is organized and our Yad members cook kosher-style meals in their homes and deliver them. We even cook kosher meals by buying kosher products and cooking in aluminum containers. However, shiva meals must be assured of being totally kosher, therefore they are prepared at the Temple. That is what Evalin is hired to do. However, a substitute cook is a necessity. If anyone has an interest in being that sub, please call the temple at 774-2649 or call or email Becky DeLois at 899-4068 or [radelois@gmail.com](mailto:radelois@gmail.com). Also, call or email for any other interest with Yad L'Yad! ■

### KESHET COMMITTEE - Fae Silverman

The Keshet committee thanks Sandra Kornblum for writing articles for the Shofar addressing LGBTQ issues in the Jewish community this year. Our goal for the coming year is to add LGBTQ safe and welcoming stickers to our doors and to fulfill a board directive to produce the content for a booklet and information for the TBE website - statements of welcoming, inclusivity, explaining the Conservative movement's take on LGBTQ topics and specifically what TBE does in relation to marriage, divorce, paperwork, etc. We welcome your input and energy! ■

### TBE MEMORIAL PARK COMMITTEE - Rick Finberg, Chair

The TBE Memorial Park Committee and staff have worked hard over the past year to maintain the grounds, make improvements at the cemetery, and optimize cemetery operations. We will continue making additional improvements over the next year.

We now have basins throughout the cemetery, holding stones for placing on graves according to Jewish tradition. We also recently completed installing a hand washing station near the main entrance for visitors to wash their hands upon leaving the cemetery as a symbol of spiritual cleansing.

We have constructed a garage at the cemetery to store our maintenance equipment and supplies and to prevent theft and vandalism.

We continue to reach out and work with families on choosing plots and markers, providing assistance with this important part of our tradition's lifecycle.

As always, we are pleased to continue to work with our caretaker, John Tanguay. He is doing a superb job of maintaining the Park. In addition, our committee relies heavily on TBE Memorial Park Administrator, Sherri Quint, who has taken a leading role in overseeing all of the improvements at the cemetery.

We encourage you to contact the Temple office for information on TBE Memorial Park, its guidelines, services and costs. It is often easier to think about these plans before they are needed. Sherri is available to meet with you and answer any questions. We also welcome comments and suggestions from TBE members regarding cemetery operations and improvements. ■

### HOUSE COMMITTEE - Daniel Gatchell, Chair

The House Committee (H/C) continues to monitor the well-being of TBE. The Main Sanctuary HVAC duct work repairs has been completed. The ever elusive roof leak to the Main Sanctuary has been located and in the process of being repaired. All the trees have been trimmed and all dead wood cut out. The garden has been weeded and a number of vegetables have been planted. The H/C has been helping with the mold issue and other building problems with the Mikva. The building Preventative Maintenance Schedule has been completed and a future work list will be generated as the result of issues found. Thanks to all of you that have donated money in order to completed unfunded items such as the Library and Youth Lounge. ■

## TIKKUN OLAM COMMITTEE - Tara Gingerich, Co-chair

The Tikkun Olam committee has some exciting updates to share. We organized a Tikkun Olam Day on Sunday, June 22. 25 members of Temple Beth El and the wider Portland community participated in the day of service, ranging from age 4 to age 87! After a quick lunch, we spent the afternoon planting the Temple Beth El garden, shelving the TBE library books on the new bookshelves in the Youth Lounge, clearing the TBE lot on Deering Avenue of brush and garbage, and clearing Portland-owned land along the Casco Bay Trail (by Trader Joe's and Walgreens). We concluded the afternoon with popsicles and the awarding of certificates to the children for their contribution. We did a small part to repair the world, and we had a great time doing it!

The Tikkun Olam committee facilitated TBE's participation in Garbage to Garden, a Portland-area curbside compost pick-up program. The temple is now composting all of our food scraps (including dairy, meat, and bones) and other organic waste. Garbage to Garden picks up the waste each week and converts it into compost. This will dramatically cut down on the garbage TBE generates, keeping organic waste -- which is the largest component of municipal waste -- out of the landfill or incinerator. And the organic waste will be turned into compost, which will be used to renew soil and generate green electricity. Plus, TBE received mature compost for our garden from the program. It's a win-win for TBE and the environment!

Third, the committee has compiled a resource list of places that members of the TBE community can donate and recycle various items, from children's toys to batteries to jeans. We look forward to sharing the list with the community this fall.

Finally, Tikkun Olam committee members have redoubled our efforts to increase TBE in-kind donations to those in need in the greater Portland community -- and TBE members have responded with generosity. With help from the staff, we created a "Tikkun Olam corner" in the lower foyer of the temple. KBE students decorated two wooden collection bins, which are now colorful and delightful. In alternating months, we have collected impressive quantities of food and household items for Preble Street Resource Center and the Jewish Family Services food pantry. Additionally, we have continued to collect professional clothing, shoes, and accessories for the ASPIRE program of the Maine DHHS and the Department of Labor, aimed at helping Maine residents currently requiring welfare assistance to find meaningful jobs. Please keep those donations coming -- they are making a difference!

As we look toward the fall, we will continue our collection efforts for Jewish Family Services and Preble Street, conducting a collection drive for warm-weather clothes among other things. We will be looking for opportunities to help the temple prepare for the High Holidays, and we will share that information with the broader TBE community. We are also exploring opportunities to partner with the National Council of Jewish Women and Congregation Bet Ha'am on an initiative focused on the growing food insecurity in Maine.

If you would like to learn more about the Tikkun Olam committee and help us plan our activities for the fall and winter, please join us for our next meeting: Sunday, September 21 at 10:30 am at TBE. All are welcome! ■

## MEET YOUR TBE STAFF

### **Rabbi Carolyn Braun**

Rabbi Braun spent two years at the Hillel Foundation at M.I.T. before beginning her journey to the rabbinate. In 1984, she received a Masters degree in Judaic Studies from the Jewish Theological Seminary. That year, the decision was made to accept women in the rabbinical program. Rabbi Braun entered with the first class of women and was ordained in 1988. Following her ordination, Rabbi Braun spent six years at Mount Holyoke College where she was the first rabbi and full-time Jewish chaplain. In December 1994, Rabbi Braun left Mount Holyoke College and assumed her present position as Rabbi of TBE. Rabbi Braun lives in Portland with her hound, Ruby.

### **Bob Bradbury – Custodian**

Bob has been with TBE since 1980 and wears many hats during his workday... from maintenance to dishes, from food shopping to setting up for events, etc. He is a veteran of the US Navy -- which is where he learned to cook -- and enjoys deer hunting. While he enjoys his peanut butter, jelly and cheese sandwiches, the staff prefer his deviled eggs or egg salad the most. Bob and his wife Anna are blessed with 14 grandchildren. Fun fact: If pocket t-shirts are ever discontinued, Bob will be forced to retire.

### **Kelsie Camire – Rabbi's Assistant**

Kelsie started working at TBE in September 2013 as the Front Office Assistant and recently took on the role of the Rabbi's Assistant. She lives in Saco with her husband of two years, Chris. Before that, she attended college in Massachusetts and New York City for Business Administration and Theatre Arts. In her free time, you'll find Kelsie on stage at local community theaters, playing indoor soccer, and trying to feed her traveling bug.

### **David Jacobs - Events & Communications Coordinator**

David started at TBE in July, 2013; he originally started as Rabbi's Assistant but his new role focuses on events, marketing, and communications in his 20-hrs per week. In 2013, he retired from professional Development work after 22 years in the non-profit field to return to his love of performing (singing, comedy, acting) and led our successful Oy Vey Café fundraising event in March. Originally from New York, David has been living in Maine with his partner Paul Jacobs for 24 years. They have a foster daughter, Amanda, a freshman at UMO. Fun fact: David is a political junkie, has worked on numerous campaigns, and served on the South Portland City Council.

### **Sherri Quint – Bookkeeper / Memorial Park Administrator**

Sherri started working at TBE in June 2009. Originally from Aroostook County, she now lives Westbrook with her dog Rooster Cogburn. She can also be seen at Shaarey Tphiloh as their bookkeeper. Sherri has one child, Ashley, who just turned 26. When she isn't at TBE, Shaarey Tphiloh, or the cemetery, she enjoys cooking, walking, knitting, and spending time with her boyfriend Brian.

## MEET YOUR TBE STAFF *continued*

### **Deena Schoenfeld - Director of Communications & Special Programs, Kol Yeladim Leader**

Deena moved to Portland in 2006 with her husband Josh and their sons Ben and Matan, after living in Jerusalem, New York, and Tucson, Arizona. She joined the TBE staff in December 2009. Deena brings a background in the arts and graphic design, professional experience in Jewish communal work and a passion for Jewish culture and Israel to her multi-faceted roles at TBE. Fun facts: Deena served in the Israel Defense Forces (IDF), and loves chocolate!

### **Jodi Veysey – Executive Director**

Jodi started at TBE in 2007 as Rabbi Braun's Assistant and became our Executive Director in 2009, spearheading such projects as the new Youth Lounge & Library and our recent Night of Jewish Baseball fundraiser. She came to TBE following nine years in South Florida as the PR Director at the Levis JCC and seven years in North Carolina where she was a product buyer for a chain of grocery stores. Jodi returned to Maine in 2002 and has been married to Terry Veysey for 10 years. Together they enjoy their five children, five grandchildren and two great grandchildren, as well as their beloved cat, Missy! Fun facts: Jodi loves bluegrass music, motorcycling, gardening, and bird watching.

### **Melanie Weiss –Director of Kadima Beth El**

Mel started at TBE in 2013 as the Director of the Kadima Beth El Hebrew school program. She is also the Director of Education at Beth Israel Congregation of Waterville, Maine (where her wife, Rachel Isaacs, is the Rabbi). She is a graduate of the Jewish Theological Seminary. A native of New York, Mel loves working and living in beautiful Maine. Fun facts: Mel likes to spend her free time making jam, pickles, and “way too-healthy” baked goods for her co-workers.

## MESSAGE FROM TBE'S EXECUTIVE DIRECTOR - Jodi Veysey *Changes*

Sitting in my office in the quiet of the morning, before the phones and voices of staff and visitors would ring out and break my concentration, I began to think about the changes that have occurred over the past year at Temple Beth El. We have seen staffing changes, the construction of the new Youth Lounge and Library, and exciting new fundraising and holiday programming. By the time you are reading this article, we also will be completing the reconstruction of the Gift Shop and beginning the revitalization of the Courtyard. Who knows what other exciting changes may be in the works for the coming year! But as I thought about all of the changes, I started to wonder about how it all was or will be perceived. Just because internally we thought these changes were good, did we take into account how everyone else felt about what was going on? So I started thinking more about change...

It's inevitable that everything in our lives will change, no matter if that alteration is miniscule in nature and barely observable, or on a grander scale. Everything shifts in one manner or another. In our daily lives the obvious change is physical. We age.... it's simply a physiological fact. The young get old and the old get older.... thankfully! Even the physical structure of our homes, of our Temple Beth El building, has or will age. Our children grow, start their careers and move on - even though at times we wish they wouldn't. In fact, many of our individual stresses in life are perhaps caused by the underlying unconscious wish that things could be more permanent and that change didn't have to occur.

You may feel that you are comfortable with the world around you, your way of life, your family, work...even the sights and sounds surrounding you are so familiar that you expect them to always be the same. Yet we all cope with change in different ways. Some of us may chose to close a blind eye in an attempt to ignore it. We don't want to acknowledge that something in our comfort zone is different, so we continue along coping with life the only way we know how and in a manner that feels familiar. Others may acknowledge the change in a negative way, expressing fear, anger and resentment that something has invaded our peaceful existence, concluding that if something is different then it must be bad. You may have heard someone in your life say “We can't do that, we've never done it that way.” Or “Why can't things stay just the way they were?” Some see change as a loss, others see change as a gain. But perhaps it's something in between!

Just as was mentioned at the beginning of this article, change is inevitable.... and that's ok depending on how you see it! Holding on to “the way things used to be” is comforting, as long as you acknowledge that the world around you will be shifting. Find comfort in the realization that even if something in your life changes, you still have your memories. Know that although something has changed, other things have also remained the same. Pushing for change is also ok, as long as you acknowledge that others around you may not wholeheartedly agree! Create change with the knowledge that it's not just your perception that is the most important thing, but that making it meld with those around you should be your goal. After looking at both of these perceptions, entertain the thought that where these two lines intersect, the connection between holding on and pushing forward, is the “sweet spot.” Make it a goal to find your balance between status quo and moving forward, acceptance and determination, compromise and resentment. ■

---

### **L'Dor V'Dor by Rabbi Braun** *continued from page 1*

little bit of courage, a lot of patience, and enough faith in humanity to step through their doorway... into a beautiful, new world.

Regardless of whether you have been with us for many years, or are visiting us for the first time, may this Rosh Hashanah and the New Year ahead open meaningful, healing, stimulating and wonder-filled doors for you.

*L'shana tova.* ■



## HIGH HOLIDAY MESSAGE FROM TBE'S RITUAL COMMITTEE

September 2014 / Elul 5774

Dear Friends and Temple Beth El Family,

Welcome to Temple Beth El High Holiday Services.

The Jewish year cycles around again. For some of us it is hard to believe that summer is coming to an end... please let time slow down! For others of us, we can't wait for the cool crisp evenings and bright foliage of autumn.

I look forward to -- and enjoy experiencing -- it all. Summer's month of Av has allowed me to experience the depth of despair and mourning. The month of *Elul* transformed that experience into introspection. All in preparation for a new beginning, *Tishrei*, with its round golden challah and sweet apples.

<i>Ya'aleh, ya'aleh, tachanunaynu mey'erev</i>	<i>May our prayers rise at evening hour</i>
<i>V'yavo, v'yavo shavateynu miboker</i>	<i>And may our cry come forth from the dawn</i>
<i>V'yera'eh, v'yera'eh rinuneynu ad arev</i>	<i>And may our song be pleasing through the day</i>

This year, we will continue our tradition of open doors and open seating for any and all who pass through the doors of TBE. I can only speak for myself when I say that moving myself out of my "comfort zone" in the social hall and into the sanctuary seats has truly transformed my *davening* experience. I hope those of you who have not done so, will try it for a service, or a day.

<i>Y'aleh, ya'aleh, koleynu mey'erev</i>	<i>May our voices rise at evening hour</i>
<i>V'yavo, v'yavo tzidkateynu miboker</i>	<i>And may our merit come forth from the dawn</i>
<i>V'yera'eh, v'yera'eh pidyoneynu ad arev</i>	<i>And may our prayer redeem us through the day</i>

This year, please join me in welcoming back our visiting chazzan, Cantor Rachael Littman. Her voice, spirit, teachings and leadership beautified and enhanced our evenings, dawns and days throughout the *chaggim*. We are so fortunate to have her back with us this year.

On these holy days, TBE asks that you observe the following in recognition of the sanctity of these days and of this place:

- 1. Electronic devices.** Rosh Hashanah and Yom Kippur are *yontifs* (*yom tovs* – holidays with special restrictions). While on TBE premises, please turn off pagers, cell phones, and electronic devices in observance of these special days.
- 2. Kippot.** Every male should wear a *kippah* (*yarmulke*). All females are welcome to wear *kippot* or head coverings as well.
- 3. Exiting services.** When the Ark is open and when the Torah is read, it would be disrespectful to exit the services. Ushers will advise when it is appropriate to enter or exit services.
- 4. Honors.** If you have an honor, please check in with an usher when you arrive. We ask that all those receiving an honor wear a *kippah* (or headcovering). For honors involving the Torah - *aliyot* (blessings), *hagbah* (lifting the Torah), *gelilah* (dressing the Torah) — we also ask that you wear a *tallit* (prayer shawl). For honors on the *bimah*, please come up to the *bimah* on the Cantor's side and exit the *bimah* on the Rabbi's side.
- 5. Kavod** (respect). Please be mindful of those around you and try to refrain from disrupting the worship of others. Seating. All are welcome and encouraged to sit in the sanctuary seats. Early *daveners* may hold seats for family and friends until 9:30 am.
- 6. Accessibility.** It is our goal that there be no barrier for anyone wishing to participate in services at Temple Beth El. If you or someone you know has accessibility needs, please contact our Executive Director, Jodi Veysey, at 774-2649.

Finally, many thanks: to the ritual committee for their hard work and dedication over the summer and throughout the year; to the dedicated TBE office staff; to Stanley Elowitch for honoring us with his chanting *Kol Nidre*; and to Rabbi Braun for her spiritual leadership, guidance and teaching, and tireless work in preparation of this season and throughout the year.

<i>Ya'aleh, ya'aleh, m'nuseynu mey'erev</i>	<i>May our refuge rise at evening hour</i>
<i>V'yavo, v'yavo l'ma'ano miboker</i>	<i>And may it come for your sake forth from the dawn</i>
<i>V'yera'eh, v'yera'eh kipureynu ad arev</i>	<i>And may atonement reach us through the day</i>

On behalf of all the members of the Ritual Committee, *Shanah Tovah U'metukah* - wishing you a good and sweet year.

Joy Krinsky, Ritual Committee Chair ■



# THANK YOU TO OUR 2013-2014 ANNUAL APPEAL SUPPORTERS

## ••• TORAH CIRCLE - \$2,500+ •••

Lisa & Adam Arens • Bonnie & James Klein

## ••• JERUSALEM CIRCLE - \$1,000 - 2,499 •••

Karen & Fred Farber • Susan & Jerome Goldberg • Ellen & Jonathan Handelman

## ••• MITZVAH CIRCLE - \$550 - 999 •••

Francine & Stephen Blattner • Karen & Alan Lerman • Steven Maier

## ••• CHAI CIRCLE - \$180 - 549 •••

Adele & Dick Aronson • Joan & Jeffrey Barkin • Rena & Michael Becker  
Marjorie & Tom Berman • Judy & Benjamin Bertram • Nancy & David Brenerman  
Amy & Jonathan Brier • Marjorie Chandler • Naomi & Michael Cohen  
Gene R Cohen Charitable Foundation • Barbara & Gilbert Dichter  
Ginny Squires-Eklund & Wayne Eklund • Judy & Dan Gatchell • Carol & Stu Gilbert  
Jerome Gillis • Dana Robbins & Stephen Gleit • Bonny Rodden & Irwin Gratz  
Donald Hoffman • Fran & Arthur Jacobson • Debbie Kanter • Ethel Koocher  
Vilean Taggersell & Robert Levine • Joan & Larry Levy • Elaine & David Lewis  
Rachelle Mack & Armand Lucier • Jacqueline\* & Patrick Maidman  
Anita Bernhardt & Ben Marcus • Cantor Kurt Messerschmidt • Ellie & Charlie Miller  
Susan & Ivan Most • Sarah & Paul Muscat • Barbara & Michael Peisner • Eleanor Potter  
Sherri Quint • Pat Reef • Miriam Remar-Millman & Harold Millman • Elaine Rosen  
Harriet & Edward Schultz • Arlene & Frederic Schwartz • Barbara & Peter Shaw  
Daniela & Andre Skalina • Dan Skwire • Susan & Sidney Steinkeler • Gail & Douglas Volk  
Patty & Ross Weber • Judy & Norman Wilson • Michael Zurakinsky

## ••• RABBI'S CIRCLE - \$72 - 179 •••

Rachael & Justin Alfond • Sara & Roger Asch • Abraham Benjamen  
Sandi Goodman-Brown & Larry Brown • Phyllis & Dan Dunitz  
Sheryl Haas & John Haas Jr. • Pam & Randy Harding • Linda Jacobs & Joseph Manning  
Ruth & Ronald Jacobs • Alvin Jolovitz • Alise & Scott Koocher • Bette & Sam Novick  
Patricia & Martin Finkelstein • Jodi & Jonathan Freedman • Bruce Ruben  
Lori & Barry Saltz • Lisa & Stephen Schiffman • Kathy & Harvey Silverman  
Betty & David Small • Harriette Small • Judith & Linwood Small • Fran & Melvin Stone  
Diana & Ernest Sturman • Susan & Paul Trusiani • Carolyn Turcio-Gilman & John Riley  
Toby & Ernest Wallach • Nadine & Richard Weinberg • Bob Zellan

## ••• CHAVERIM CIRCLE - \$1 - 71 •••

Paul Abramowitz • Harlan Baker • Deborah & John Barlock • Barbara Berkovich  
Ilene & Myron Berman • Dauna Binder • Rabbi Carolyn Braun • Gerri & Peter Bridgman  
Sharon Bresler • Michael Clenoff • Evelyn Cohen • Leah Cohen • Joan & James Cohen  
Janine Collins • Mark Crasnick • Minna Davidson Noone  
Sara Kahn-Troster & Rabbi David Freidenreich • Sarah Darhower & Tommy Darhower Jr  
Franziska Fritzsche-Jensen • Suzanne & Gerald Gordon • Thea & Michael Greene  
Zelda Greenspun • Karen & Geoff Hindall • Rebecca & Jeffrey Howes  
Helen Isenman & Susan Isenman • Isabelle Cohen Johnson & Adam Johnson  
Joy Krinsky & David Kemmerer • Cynthia & Stephen Lerman • Rose Novick  
Elaine Kerachsky & Tony Paratore • Recia & Carl Richman • Shirley Rosen  
Susan & Stephen Schwartz • Janine & Greg Smestad • Elizabeth Spector • Tara Turcotte  
Deena & Jack Weinstein • Leiba Cohen Webber & Walter Webber • Rita Weisberg

\* deceased

TESHUVA • TEFILLA • TZEDAKAH  
*Promises to Keep*

Temple Beth El's  
High Holiday Campaign 5775

Our High Holidays are a period of deep reflection, personal restoration, and spiritual renewal. During this time, we are motivated to re-examine our lives by showing more compassion, and by deepening our commitment to family, friends, and community.

Our goals, both as individual congregants and as a kehillah (congregation) at Temple Beth El, are one and the same. Temple Beth El provides many programs and services that would not exist without your generous support. Yad L'Yad caring visits, meals, and cards to those who are in need of comfort or assistance, Kadima Beth El Religious School scholarships, special family services, and continuing Jewish education are just a few. We strive to meet the needs of our ever-changing world and our congregants, but we need your help.

As we come together this High Holiday season, we hope you will consider the three components of our 2014 Promises To Keep campaign:

- **TESHUVA** - Return - a commitment to re-examine and change one's life
- **TEFILLA** - Prayer - a direct connection to the Divine, a union with a power greater than ourselves
- **TZEDAKAH** - Acts of justice and charity

We do have "promises to keep."

You have our full commitment that we will continue to provide quality Jewish programs, meaningful prayer services, engaging family events, an innovative Hebrew school curriculum, lifecycle celebrations and observances, and compassionate support and comfort to those in need, while maintaining an open and welcoming place for all who come through our doors.

Please help us continue to offer these programs and services by making a donation to our "Promises to Keep" High Holiday campaign. Envelopes will be available at High Holiday services to pledge your donation. Thank you so much for your support.

With warmest wishes to you and yours, L'SHANA TOVA

**Karen Lerman & Robert Aranson**  
2014 High Holiday Campaign Chairs

**TEMPLE BETH EL GIFT SHOP**  
*Grand Re-Opening*

Sunday, October 26<sup>th</sup>  
9:30 am - 12:30 pm

Come see our newly remodeled space stocked with gorgeous items specially selected with you in mind:

- Hand-crafted Judaica
- Stunning artwork by Michal Meron
- Beautiful crocheted Kippot
- Unique Kiddush cups, Menorahs and more by Israeli artisan Yair Emanuel

The TBE Gift Shop is open during regular business hours:  
Monday - Thursday 9 am - 5 pm | Friday 9 am - 3 pm.

# HIGH HOLIDAYS NOTES & NEWS

## **SERVICES** (see schedule for specific times)

- Morning Services in the Main Sanctuary begin at 8:30 am
- Family Services with Rabbi Braun for families with children in 1<sup>st</sup> - 7<sup>th</sup> grade will be held in Room 4 from 9:30 - 10:40 am.
- Children's Activities for families with newborns through Kindergarten age will be held in Room 3 from 10:00 - 10:40 am.
- High Holiday Youth Activities for children in 1<sup>st</sup> - 7<sup>th</sup> grade will be held in Room 4 from 11:00 - 11:45 am.

## **\*\*CHILD CARE**

- Please note that specified Child Care will not be provided this year. Instead, please feel free to attend the Family Service, Children's Activities or the High Holiday Activities for children in various age groups.

## **PARKING**

- When parking on the street, please help us to maintain good relationships with our neighbors by noting that Parking within FIVE feet of a driveway, hydrant, or crosswalk is prohibited. Please observe all NO PARKING signs.
- During the High Holidays, parking is permitted on both sides of Devonshire Street, the TEMPLE SIDE ONLY of Deering Avenue and on the TEMPLE SIDE ONLY of Wadsworth Street.
- Those needing assistance entering the building may be dropped off in the back driveway and access the building up the ramp and through the Courtyard doors. A wheelchair is available in the building if additional assistance is required.

The Portland Center For Assisted Living on Devonshire Street is available to us again this year for the following purpose:

- Parking will be reserved only for those members who are 70+ or disabled and in only the 25 perimeter spaces
- **\*\*Please note that this excludes the spaces that are along the edge of the parking lot closest to their building.**
- In order to maintain this arrangement we must use only those spaces offered to us. When using the parking spaces at the Center, please only park in the marked spaces; do not park on the grass or in areas of the lot that are not designated for parking, as this can inhibit ambulance access.

## **HIGH HOLIDAY CAMPAIGN 5775**

Your High Holiday Campaign pledge card will be available for you to pick up at services and select your pledge. Remember that it's not about how much you give, it's that you give. Your much needed support is sincerely appreciated!

## **HIGH HOLIDAY USHERS AND GREETERS NEEDED**

Please contact Kate Foye at [kfoye@hyde.edu](mailto:kfoye@hyde.edu) if you would be willing to help with an hour (or more) of Ushering or Greeting for the High Holidays.

## **HIGH HOLIDAY SPONSORS NEEDED**

Many of the extra touches that make the High Holidays more accessible and enjoyable are the result of donations from High Holiday sponsors. These generous members help us spruce up for the High Holidays and allow us to celebrate in comfort and ease. Thank you to those who have already agreed to sponsor various aspects of the Holiday Services. We are still looking for sponsors for the following: the Fabric Wall in the Social Hall, Landscaping Improvements, Window Washing, Social Hall Chair Rentals, Yom Kippur Break the Fast, Refreshments at Children's Programming, Children's Activities, High Holiday Youth Activities, Challahs, Sanctuary Plant upkeep, Kitchen Cleaning, Advertising, and Security. If you are interested in becoming a High Holiday Sponsor, no matter at what level, please contact our Executive Director, Jodi Veysey, at 774-2649, ext. 204, or email [director@tbemaine.org](mailto:director@tbemaine.org).

## **WELCOMING GUESTS FOR THE HOLIDAYS**

Each year we receive a number of requests from those hoping to find a family with which to celebrate the High Holidays. If you and your family have room at your High Holiday table for an extra guest from the community, or if you or someone you know needs a place to be, please let the office know as soon as possible so that we may match people to homes by calling 774-2649.

## **SANCTUARY SEATING**

Continuing with our open seating policy, all are welcome to sit in the Sanctuary or Social Hall on a first-come, first served basis. Please observe the Sanctuary seats that have been set aside for those who have chosen to support the Temple with a High Holiday Sanctuary seating donation as they have done for many years. These seats will have a blue sticker and a number on them indicating a reserved seat. A seating chart will be visible in the lower lobby and all ushers will have a chart with the location and name of who is seated there if assistance is needed. This will ensure that all those who donated will have their selected seat in the Sanctuary available to them. All others are welcome and invited to sit in any of the remaining open seats. ■

PLEASE JOIN US FOR THE

# Blessing of the Children

ברכת ילדים

ON ROSH HASHANAH - THURSDAY, SEPT. 25, 2014  
AT 10:45 AM

On the first day of Rosh Hashanah, we would like to welcome God's newest creations into our community and offer them a blessing. Please join us as we invite all children and grandchildren born to members over the last two years to join us in the main Sanctuary for a special *Birkat Yeladim*, Blessing of the Children.

RSVP to the TBE office -  
call 774-2649, or email  
office@tbemaine.org.



TEMPLE BETH EL • 400 DEERING AVENUE  
PORTLAND, MAINE 04103 • www.tbemaine.org

# SHABBAT HALAILA

*You're invited!*



*Join us for our monthly*  
**FAMILY KABBALAT SHABBAT SERVICE  
& COMMUNITY DINNERS**

TBE's religious school program, Kadima Beth El, invites the entire congregation to our special monthly Family Shabbat Service and Community Dinners. Please join us for this wonderful opportunity to celebrate Shabbat together with old friends and new over a joyous Shabbat meal prepared by our amazing volunteers! To help out, please contact the TBE office at 774-2649.

**Friday evenings** | **Sept. 12 • Nov. 14 • Dec. 12**  
**at 5:30 pm:** | **Jan. 9 • Feb. 13 • March 13 • May 8**

# Teen BEIT MIDRASH

Sunday mornings,  
twice a month

Starts September 14<sup>th</sup>

A TBE learning group  
for 8<sup>th</sup> - 12<sup>th</sup> graders

Contact Mel Weiss  
at [education@tbemaine.org](mailto:education@tbemaine.org)  
for more information.

# KOL YELADIM

**TBE'S Early Childhood Education  
Program for children ages 0-3 years**

Sunday mornings, 9:15 - 10:00 am

**STORIES \* CRAFTS \* MUSIC**

Monthly Kol Yeladim events:

Sept. 7, 2014 | Oct. 12, 2014

Nov. 2, 2014 | Dec. 14, 2014

Jan. 11, 2015 | Feb. 1, 2015

March 1, 2015 | March 29, 2015

May 17, 2015



Kol Yeladim (Hebrew for "voice of the children"), TBE's early childhood program, is a positive, fun and educational introduction to the joys of Judaism, Hebrew, Shabbat and Jewish holidays, for children ages 0-3 years and their families.

**Free and open to the community.  
ALL ARE WELCOME!**

## CONDOLENCES

**Sincere condolences to the family of Lawrence Garber**, 66, (son of Barney and Esther Garber), who passed away on April 11. He is survived by his brother, Harold Garber and his wife, Marilyn; a nephew, Michael Garber; cousins Adele (and Dick) Aronson and Elaine (and David) Lewis and several other cousins and family members. *Zichrono l'vracha - may Lawrence's memory be for a blessing.*

**Sincere condolences to the family of Jeanette (Jean) Emple Chamoff** who passed away on Saturday, May 10 at the age of 95. Jean was the mother of Judy Gatchell and mother-in-law of Dan Gatchell; grandmother of Kate (and husband Colin) Foye; and great-grandmother of their children Connor, Sam and Joshua. *Zichrona l'vracha - may Jean's memory be for a blessing.*

**Sincere condolences to Robin Stevens, her husband Drew and their children Nina and Victoria** on the passing of Robin's mother, Nancy Frenkel. Nancy passed away on Monday, May 19 in Cumming, Georgia at the age of 70. *Zichrona l'vracha - may Nancy's memory be for a blessing.*

**Sincere condolences to Adam and Lisa Arens** on the passing of their brother-in-law, Robert Wasilewski, who passed away suddenly on May 16 in Ocala, FL at the age of 50. Robert was the husband of Adam's sister, Tori. *Zichrono l'vracha - may Robert's memory be for a blessing.*

**Sincere condolences to the family of Richard Carvel**, a founding member and Past President of Temple Beth El, who passed away on Wednesday, May 28. Richard is survived by his son Steven Carvel and his wife Shelley, his daughter Cynthia Carroll of Portland, his grandchildren Amy Carvel, David Carvel, and Heather Carroll, and his great-grandchildren Nathaniel and Skylar Carroll. *Zichrono l'vracha - may Richard's memory be for a blessing.*

**Sincere condolences to Susan Trusiani** on the loss of her father, Isidore Irving Neufeld, who passed away on Friday, May 30 at the age of 91. *Zichrono l'vracha - may Isidore's memory be for a blessing.*

**Sincere condolences to the family of Jeanette Greene**, who passed away on Friday, May 30. Jeanette was the sister-in-law of Miriam Remar-Millman and aunt to Joan Levy. *Zichrona l'vracha - may Jeanette's memory be for a blessing.*

**Sincere condolences to Jane Mack** on the loss of her mother, Babette Reuben, who passed away on Sunday, June 15 at the age of 86. Babette will also be sadly missed by her grandsons, Michael and Larry Mack. *Zichrona l'vracha - may Babette's memory be for a blessing.*

**Sincere condolences to Paul and Sarah Muscat** on the loss of Paul's father, Erwin Muscat, who passed away on Monday, June 23 in New York. Erwin will be sadly missed by Paul and Sarah and their daughters, Rachel, Claire and Emily. *Zichrono l'vracha - May Erwin's memory be for a blessing.*

**Sincere condolences to Ivan and Sue Most** on the loss of Ivan's brother, Stuart Leonard Most, who passed away on Tuesday, July 1 in Rochester, NY. Stuart is survived by his wife, Rochelle, son Neal (and Sharon), daughters Faith (and Bill), Naomi (and Peter), brothers Arnold (and Debbie), Ivan (and Susan) and their children Sylvia Most (and Alan Cardinal), Julie Widrow (and Michael), Matthew (and Shari). *Zichrono l'vracha - may Stuart's memory be for a blessing.*

**Sincere condolences to Shari Brinkman-Young, her husband D. Kelley Young and their daughter Alexandra**, on the loss of Shari's father, Carl Alexander Brinkman, M.D., who passed away on Saturday, July 26 in Bluffton, SC. *Zichrono l'vracha - may Carl's memory be for a blessing.*

**Sincere condolences to the Maidman family** on the loss of beloved wife and mother, Jacqueline, who passed away in NY on Thursday, August 7 after a valiant struggle with cancer. Jackie will be sadly missed by her husband Dr. Patrick Maidman, daughters Allison and Beatrice, son Jonathan and mother, Barbara Lazrus. *Zichrona l'vracha - may Jackie's memory be for a blessing.*

## TODAH RABAH

Todah Rabah to all those who participated in Shabbat and holiday services: **Abbie Halpern, Barbara Dichter, Beth Strassler, Bill Burge, Debbie Kanter, Deborah Ziffer Goodman, Eden Johnson, Ellie Miller, Emily Freedman, Esther Goodman, Gabrielle Goodman, Harriet Freidenreich, Isabelle Cohen-Johnson, Jon Maidman, Joy Krinsky, Judy Gatchell, Judy Wilson, Kaspar Wilder, Michael Eismann, Morton Gold, Naomi Freidenreich, Naomi Goodman, Norm Wilson, Paul Muscat, Rabbi David Freidenreich, Rabbi Hillel Katzir, Rafi Halpern, Rebecca Goodman, Riley Johnson, Russell Miller, Sara Kahn-Troster, and Tom Berman.**

Todah Rabah to those who helped with the Passover and Shabbat Dinner on Friday, April 25: **Tommy Darhower Jr, Judy Gatchell, Fran Fritzsche-Jensen, Stephanie Cummings, Elaine Braun Keller.**

Todah Rabah to **Jean Aranson** for creating and painting the beautiful mural on the wall in the new Library and Youth Lounge.

Todah Rabah to **Larry and Wendy Kane** for the donation of a beautiful chair >>

>> for the Youth Lounge in honor of their granddaughter Sarah's Bat Mitzvah, and to **Terry Veysey** for putting together the new chair for the Youth Lounge.

Todah Rabah to **Benjamin, Jeri and Baxter Brem** for sponsoring the Oneg on Friday night May 9th in loving memory of Paul and Anna Brem and their families that perished in the Holocaust.

Todah Rabah to our **Kadima Beth El students, teachers, and parents** who made our Yom Ha'atzmaut Shuk & Celebration a huge success:

- **To our KBE 3-6 graders** for staffing the shuk booths and running such an awesome tour of Israel.

- **To our KBE 7th graders** for their presentations on Israeli populations and for running our trivia room.

- **To our wonderful madrichim** (classroom aides) for their work staffing shuk booths and supervising our KBE students.

- **To our amazing volunteers: Tara Gingerich, Jon Gelchinsky, Sarah Legendre, Carolyn Turcio Gilman, Isabelle Cohen Johnson, Stephanie Cummings, Sharon Craig, Leticia Huttman, Joy Krinsky and Tom Berman.**

- **Also to Bob Bradbury, Deena Schoenfeld, Rabbi Braun and Diana Staples** for their help with set up, event coordination, food prep, and clean up.

- And finally a HUGE Todah Rabah to our **incredible Kadima Beth El Director Mel Weiss**, who designed the program and content, masterminded and executed the food preparation, and without whom this event would not have happened.

Todah Rabah to **Jon & Jodi Freedman** for sponsoring the Shabbat Oneg and Kiddush on May 16-17 in honor of their daughter Emily's Bat Mitzvah.

Todah Rabah to **Patrick & Jackie Maidman** for sponsoring the Oneg on Friday night, May 23 and luncheon on Saturday in honor of their son Jonathan's Bar Mitzvah.

Todah Rabah to **Becky Delois** for preparing a wonderful shiva meal for the Gatchell and Foye families.

Todah Rabah to those who hosted the Tzofim (Israeli Scouts) after their concert at TBE: **Alisha Goldblatt & Zachary Heiden, Joan & Larry Levy, Olivia Solodar & Elliot Wincele, David & Paul Jacobs, Karen & Geoff Hindall, Sharon & Stephen Craig, Susan Shapiro, Meghan & Phil Gaven, and Orly Mendelson Biggie.**

Todah Rabah to **Adam Rice** for weeding and turning the TBE vegetable garden in the courtyard and getting it readied for planting. Todah Rabah to **Gregg Garson** for climbing onto the roof to seal it to prevent rain damage.

Todah Rabah to those who helped with the TBE's Night of Jewish Baseball fundraising event: **Jodi Veysey, Lee Goldberg, Karen Lerman, Rabbi Carolyn Braun, David Jacobs, Deena Schoenfeld, Sherri Quint, Kelsie Camire, Melanie Weiss, Brian Zutter, Evalin Stearns, Bob Bradbury, Becky Abelon DeLois & Joe DeLois, Tom Berman, Dan Gatchell, Jonathan Brier, Amy Brier, and Terry Veysey.**

Todah Rabah to **Justin and Rachael Alford** for co-sponsoring the Kiddush on Saturday, June 21 in honor of their daughter's baby naming ceremony, and to **Bob Zellan** for co-sponsoring the Kiddush in appreciation of Temple Beth El.

Todah Rabah to TBE's Executive Director, **Jodi Veysey** for her continued dedication. The TBE Board presented her with a card and lovely gift for her service to TBE.

Todah Rabah to **Stephanie Cummings** for helping to set up and to our friends at **PJ Library** for lending us books for Shabbat HaLaila.

Todah Rabah to those who volunteered for Tikkun Olam Day of Caring: **Nina, Victoria, Drew & Robin Stevens; Ellie, Benny & Jon Gelchinsky and Tara Gingerich; Joy Krinsky; Inge & Adam Herzog-Rice; John Riley; Carolyn Turcio-Gilman; Barbara Peisner; Sharon Bresler; Leona Trinin; Riley, Eden & Isabelle Cohen Johnson; Bess & Elowen Brunton; Tracy Hall; Kaspar Wilder; Rabbi Braun; and, Ariel & Arava Bernstein.**

Todah Rabah to **Jeffrey & Abigail Halpern** for adding joy to our Kiddushes with their donation of Maker's Mark.

Todah Rabah to **Tom Berman** for volunteering his time to resolve some lighting, computer and server issues at TBE.

Todah Rabah **Ernie and Toby Wallach** for the donation of the new bins to help keep our storage areas more organized.

Todah Rabah to **Judy and Norm Wilson** for sponsoring the Kiddush on Saturday, Aug. 2 in memory of Judy's mother, Muriel Worth, and in honor of Rabbi Braun's birthday.

Todah Rabah to **Joy Krinsky** for organizing, and to the following for reading during the Tisha B'Av services: **Rabbi Braun, Jane Sloven, Ellie Miller, Abigail Halpern, and Natan & Yoel Kahn.**

Todah Rabah to **Tracey Hall and Bill Burge** for providing the Friday night dinner and the Kiddush over the weekend of Aug 8-9 in honor of their daughter Kaspar Wilder's Bat Mitzvah, and to our members who assisted in the cooking and preparations.

Todah Rabah to **Barbara and Gil Dichter** for sponsoring the Kiddush on Saturday, Aug. 15 in honor of their anniversary, the anniversary of Gil's Bar Mitzvah, and in memory of Gil's father, Abraham.

Todah Rabah to **Kaspar Wilder** for weeding the TBE gardens.

Todah Rabah to **Ernie and Toby Wallach** and **Lisa Schiffman** for their work on the library.

Todah Rabah to **Rorie Lee, Ross Goldberg** and **Clara Purinton** for maintaining the Sanctuary plants.

## MAZEL TOV

Mazel Tov to **Dana Robbins** who had four poems and one essay accepted for publication. The poems "Portrait of Old Woman in Blue," "Orange Angels," and "Sarah Unbound" are to be published in *The Jewish Women's Literary Annual*. The poem "Gratitude" was published in *The Examined Life: A Literary Journal of the University of Iowa Carver College of Medicine*, along with the essay, "The Embodiment."

Mazel Tov to **Tom Berman** for his recognition at the April 29 Sea Dogs game during National Volunteer Recognition Day.

Mazel Tov to **Harriet and Ed Schultz** on the engagement of their son Jonathan to Molly Bloom, in Brooklyn, NY.

Mazel Tov to Temple Beth El's Volunteer of the Year award recipient, **Isabelle Cohen Johnson.**

Mazel Tov to **Miriam Gleckman** on her graduation from Barnard on June 18. She received two academic awards and a student-selected award, and was also elected to Phi Beta Kappa. In Fall 2015, Miriam will start a PhD program in Sociology at the University of Michigan.

Mazel Tov to **Lynn Goldfarb** as the incoming president of NCJW.

Mazel Tov to **Rachael and Justin Alford** on the birth of their daughter Esther Belle on April 13. She joins big brother Jacoby.

Mazel Tov to **Harriet and Ed Schultz** on the wedding of their daughter Johanna to Justin Herman in Oakland, CA on July 5.

Mazel Tov to **Esther Goodman and her family** on the occasion of Esther's bat mitzvah the weekend of July 11-12.

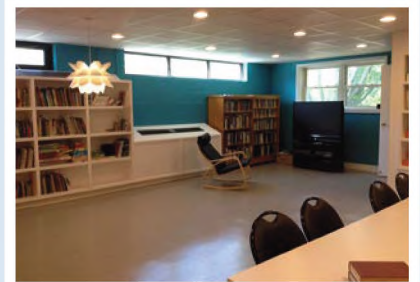
Mazel Tov to **Sid & Sue Steinkeller** on the birth of their first grandchild, Jacob Henry Silverstein, born to parents Jill Steinkeller and Jared Silverstein in Newton, MA on August 6.

Mazel Tov to **Kaspar Wilder and her family** on the occasion of Kaspar's Bat Mitzvah the weekend of August 8-9.

Mazel Tov to **Abigail and Jeffrey Halpern** on the birth of their son Ezra on Tuesday, August 12 in Portland. Ezra joins big brother Rafi.

Mazel Tov to **Betty and David Small and the entire Small family** on the birth of Betty and David's granddaughter Charlotte Reese Frey, born to parents Hannah (Small) and David Frey in Portland on August 11.

## YOUTH LOUNGE & LIBRARY UPDATE



Thanks to generous underwriting from the Norman M. Finberg Scholarship Fund, TBE's Youth Lounge & Library will soon have a beautiful new couch, study table and chairs.

Our newly remodeled multi-purpose space will be used regularly for Kadima Beth El Religious School classes, our Teen Beit Midrash, and youth programs, as well as for committee meetings, adult education classes and other group gatherings. When not reserved for programming, we welcome members and visitors to utilize our library collection, currently in the process of being organized and catalogued.

If you are interested in using the space for a program, please contact the TBE office at 774-2649 or [events@tbemaine.org](mailto:events@tbemaine.org).

# DONATIONS & TRIBUTES

MID APRIL - JULY 2014

## ADULT EDUCATION FUND

Carl & Sharon Minkowitz  
In memory of David A. Crasnick

## BUILDING FUND

Eileen Kalikow  
In memory of Evelyn Goldberg  
Jon & Amy Brier In memory of  
Jeanette Emple Chamoff

## BROTHERHOOD

Mark Crasnick  
In memory of David A. Crasnick  
In memory of Rose Crasnick  
Phil & Elizabeth Levinsky  
In memory of Hyman Zaitlin  
In memory of Lenore Fleming  
Pat Reef  
In memory of Isidore Irving  
Neufeld  
In memory of Stuart Leonard  
Most  
In memory of Murray Rosen  
In memory of Erwin Muscat  
Armand Lucier & Rachele Mack  
In memory of Jeanette Emple  
Chamoff

## ENDOWMENT

Charlie & Ellie Miller  
In memory of Dorothy P. Miller  
In memory of Stuart Leonard  
Most  
In memory of Erwin Muscat  
Norm & Judy Wilson  
In memory of Inez Gray

## KOOCHER/ROBINOV FUND

Jackie Robinov  
In memory of Eva Wald  
In memory of Gerald S. Robinov  
In memory of Frank Robinov  
In memory of Rachel Reimer  
Stan & Sherrie Schatz  
In memory of Susan Singer's  
father  
In memory of Fran Robinov  
In memory of David Koocher  
In memory of Nathan Koocher  
In memory of Joseph Schatz  
In memory of Mary A.  
Cesario  
In memory of Louis "Tuts" Brown  
In memory of Stanley H. Reuben  
In memory of Jeanette Emple  
Chamoff

## LIBRARY FUND

Ernie & Toby Wallach  
Mazel Tov to David Jacobs  
on the new addition to his  
family  
In honor of our 53<sup>rd</sup> anniversary

In honor of Tom Berman for all  
his dedication & work  
In memory of David Schreiber  
In memory of Stephen Pollard's  
sister, Barbara  
In memory of Jeanette Emple  
Chamoff  
In memory of Erwin Muscat  
Speedy recovery Dan Gatchell

## RABBI'S DISCRETIONARY FUND

Abraham & Esther Eisenberg  
In thanks for services & hospitality  
Arthur & Barbara Kahn  
In thanks for services & hospitality  
Elaine Rosen  
Jerry & Phyllis Rosen In honor of  
Mel & Fran Stone's 70<sup>th</sup> anniversary  
Eli & Katie Small  
In honor of Naomi Small's naming  
Taylor Small & Lakeshia Parker  
In honor of Sela Small's naming  
Ivan & Sue Most  
In memory of Stuart Most  
Harold Millman & Miriam Remar-  
Millman  
In memory of Frances Berkowitz  
In memory of Jeanette Green  
Steve & Peggy Shapiro  
In memory of William Shapiro  
Harvey & Kathy Silverman  
In memory of Samuel Silverman  
David & Nancy Brenerman  
In memory of Richard Carvel

## EDWARD WEISBERG FUND

Helen Isenman & Susan Isenman  
In memory of Abraham Isenman  
Rita Weisberg  
In memory of Rose Weisberg  
Kaplan  
Speedy recovery Rose Novick

## GENERAL FUND

David & Nicole Goldstein  
In honor of David Freidenreich &  
Sara Kahn-Troster's anniversary  
Shirley Rosen  
Thinking of you & loving you  
Bernice Templeman  
In honor of Dana Robbins'  
recent publications  
In honor of the 100<sup>th</sup> birthday of  
Frances Lyons  
In memory of Lena Binder  
In memory of Jim Sylvia's mother  
In memory of Joseph Binder  
In memory of Jeanette Green  
In memory of Robert Wasilewski  
In memory of Erwin Muscat  
In memory of Jeanette Emple  
Chamoff

In memory of Isidore Irving  
Neufeld  
Speedy recovery Joan Levy  
Speedy recovery Larry Simensky  
Speedy recovery Geoffrey Rice  
Speedy recovery Rose Novick  
David & Nicole Goldstein  
In honor of Rabbi Braun's birthday  
Jeffrey & Abbie Halpern  
In honor of Matt & Lynn Goldfarb  
Alison Leonard  
In honor of Esther Belle Alfond  
Lunder Foundation  
In honor of Esther Belle Alfond  
Jeffrey & Joan Barkin  
In memory of Jane Belsky  
Peter & Sandy Bennett  
In memory of Herbert H. Bennett  
Dauna Binder  
In memory of Henry Binder  
Steven Brinn & Judy Sataloff  
In memory of Julius Z. Brinn  
Janine Collins  
In memory of Marion Fusco  
In memory of Anthony Imandi  
In memory of Anna Imandi  
Minna Davidson Noone  
In memory of David Davidson, MD  
David Freidenreich & Sara Kahn-  
Troster In memory of Jeanette  
Emple Chamoff  
Eric & Jackie Goldman  
In memory of Edward Goldman  
Jim & Bonnie Klein  
In memory of Robert Slater  
Leonard & Anne Kovit  
In memory of Blanche Kovit  
Elliott & Ellen Lerman  
In memory of Sidney Lerman  
Steve & Cindy Lerman  
In memory of Richard Lerman  
In memory of Martin Sprince  
In memory of Sam Lerman  
Phil & Elizabeth Levinsky  
In memory of Ruth Zaitlin  
Larry & Joan Levy  
In memory of Mollie Kayden Remar  
Peggy Levy Keaney  
In memory of Richard J. Levy  
David & Elaine Lewis  
In memory of Harry Weisberg  
In memory of George I. Lewis  
In memory of Jennie Weisberg  
In memory of Ida Dion  
In memory of Bernard Lewis  
In memory of Paul Lewis  
Charlie & Ellie Miller  
In memory of Bernard Miller  
Elaine Miller  
In memory of Dorothy Miller Gove  
Camilla Polisner  
In memory of Eugene Emery

Harold Millman & Miriam Remar-  
Millman  
In memory of Irving Remar  
In memory of Barbara Millman  
In memory of Barbara Kalman  
Carl & Recia Richman  
In memory of Morris Richmar  
Steve Gleit & Dana Robbins  
In memory of Murray Rorer  
Peter & Barbara Shaw  
In memory of Emanuel Shaw  
Howard & Iris Sherman  
In memory of Nisson Shermar  
John Riley & Carolyn Turcio-Gilman  
In memory of Ida Goldmar  
David & Barbara Turitz  
In memory of Anna Turitz  
In memory of Harry Turitz  
Dick & Adele Aronson In memory  
of Isidore Irving Neufeld  
Gil & Barbara Dichter In memory of  
Jeanette Emple Chamoff  
In memory of Erwin Muscat  
In memory of Stuart Leonard  
Most  
Abe & Tama Fineberg In memory of  
Isidore Irving Neufeld  
Jerry & Susan Goldberg  
In memory of Louis "Tuts" Brown  
Phil & Elizabeth Levinsky  
In memory of Isidore Irving  
Neufeld  
In memory of Jeanette Emple  
Chamoff  
David & Elaine Lewis  
In memory of Isidore Irving Neufela  
Samuel & Ruth Mack  
In memory of Isidore Irving Neufela  
Charlie & Ellie Miller In memory of  
Jeanette Emple Chamoff  
Michael & Barbara Peisner  
In memory of Jeanette Emple  
Chamoff  
Steve Gleit & Dana Robbins  
In memory of Stuart Leonard  
Most  
In memory of Jeanette Emple  
Chamoff  
Abe & Tama Fineberg  
Speedy recovery Susan Koren  
Speedy recovery Larry Simensky  
Sylvia Kaplan Wenig & Mildred  
Kaplan Drees Remembering  
their sister, Shirley Kaplan Holzberg  
GIFT SHOP DONATIONS  
Alan & Karen Lerman  
Gift Shop Renovations  
Happy Mother's Day to Rita  
Weisberg  
Happy Mother's Day to Shirley  
Rosen



# DONATIONS & TRIBUTES

MID APRIL - JULY 2014

*In honor of Noah Levy's high school graduation*  
*In honor of the birth of Esther Alfond*  
*In honor of Jeremy Baker's Bar Mitzvah*  
*In honor of Amy Zimmerman's engagement to David Smith*  
*In honor of Isabelle Cohen Johnson receiving the Eleanor Merdek Award*  
*In honor of Josh Messier's engagement to Jessica Feinberg*  
*In honor of Esther Goldberg's birthday*  
*In honor of the birth of Ernie & Diana Sturman's great grandson*  
*In honor of the birth of Rick & Anita Romanow's grandson*  
*In honor of Emily Freedman's Bat Mitzvah*  
*In memory of Nancy Frenkel*  
*In memory of Richard Carvel*  
*In memory of Jeanette Emple Chamoff*  
*In memory of Robert Wasilewski*  
*In memory of Stuart Leonard Most*  
*In memory of Babette Reuben*  
 Fay Brown  
*In memory of Izzy Neufeld*  
 Abe Benjamen  
*In memory of Richard Carvel*

## KADIMA BETH EL RELIGIOUS SCHOOL

George & Bobbie Gordon *In memory of Ruth Fidelman Kornfeld*  
 Debbie Kanter  
*In memory of Jennie Levine*  
*In memory of Norman Bogg*  
*In memory of Jeanette Emple Chamoff*  
 David & Nancy Brenerman  
*In memory of Jeanette Emple Chamoff*

## KIDDUSH FUND

Mark & Norma Filler  
*In memory of Sylvia Leveille*  
 Abe & Tama Fineberg  
*In memory of Rose Bickman*  
 Lenny & Merle Nelson  
*In memory of David Royte*  
 Sid & Sue Steinkeler  
*In memory of Herman Steinkeler*  
 Paul & Susan Trusiani  
*In memory of Nathan Neufeld*

## TBE MEMORIAL PARK

David Kanter *In thanks*

Wendy Coppersmith  
*In memory of Anne Coppersmith*  
*In memory of Rebecca Coppersmith*  
*In memory of Abraham Coppersmith*  
 Michael & Susan Crasnick  
*In memory of Rachel Rose Crasnick*  
 Alvin Jolovitz  
*In memory of Sylvia Jolovitz*  
 Rubin & Sally Laskoff  
*In memory of William Rothblatt*  
 Pearl Levine  
*In memory of Edith Bick*  
*In memory of Lena R. Kaufman*  
 Carl & Sharon Minkowitz  
*In memory of Rachel Rose Crasnick*  
 Ernest & Diana Sturman  
*In memory of Louis "Tuts" Brown*  
*In memory of Isidore Irving Neufeld*  
 Burt & Barbara Epstein  
*In memory of Jeanette Emple Chamoff*  
*In memory of Stuart Leonard Most*  
*In memory of Erwin Muscat*

## MUSIC FUND

Dick & Adele Aronson  
*In memory of Louis "Tuts" Brown*  
*In memory of Jeanette Emple Chamoff*  
*In memory of Robert Wasilewski*  
 Morton & Esther Gold  
*In memory of Cantor & Mrs. Leon Gold*

## NORMAN M. FINBERG

SCHOLARSHIP FUND  
 Nancy Finberg  
*In honor of Zane Moorhead's Bar Mitzvah*  
*In honor of Dick & Adele Aronson's granddaughter Jessica's graduation from Cal Poly*  
*In honor of David & Elaine Lewis' grandson Scott's graduation from law school*  
*In honor of David & Elaine Lewis' grandson, Josh's graduation from Tufts*

## OFFICE SUPPLIES

Ernie & Toby Wallach

## TECHNOLOGY FUND

Matt & Lynn Goldfarb  
*In honor of Tom Berman*

## YAD L'YAD

Jeffrey & Abbie Halpern

Ernest & Diana Sturman  
*In honor of Mel & Fran Stone's 70<sup>th</sup> anniversary*  
 Dan & Phyllis Dunitz  
*In memory of Samuel A. Shuman*

## Yahrzeit Fund

Stephen & Susan Abramson  
*In memory of Edith Nelson*  
*In memory of Jules Abramson*  
*In memory of Samuel Nelson*  
 Dorothy & David Baker  
*In memory of George Bress*  
 Scott Black  
*In memory of Selma W. Black*  
 Stephen & Francine Blattner  
*In memory of Sharon Friedes*  
 Libby Blotner  
*In memory of Sam Blotner*  
*In memory of Ann Rosen*  
*In memory of David Blotner*  
 Ron & Gaye Blumenthal  
*In memory of Louis Blumenthal*  
 Natalie Brenner  
*In memory of William Goldstein*  
*In memory of Allan Goldstein*  
 Sharon Bresler  
*In memory of Bertha Murinson*  
*In memory of Larry J. Murinson*  
 Bill & Vera Clenott  
*In memory of Robert Clenott*  
*In memory of Max Rosen*  
 David & Janis Cohen  
*In memory of Alexander Cohen*  
 Adam Johnson & Isabelle Cohen  
*In memory of Yehuda Leon Cohen*  
 Dr. Sara Cope  
*In memory of Dr. Samuel Cope*  
 Minna Davidson Noone  
*In memory of Gisela K. Davidson*  
 Charlotte Farber  
*In memory of Lillian Lonstein*  
 Robert & Ruth Finegold  
*In memory of Flora Cahn*  
 Alan & Elaine Fink  
*In memory of Blanche Fink*  
 Joyce Freedlander  
*In memory of Ruth Heimberg*  
 Franziska Fritzsche-Jensen  
*In memory of Peter M. Jensen*  
 John & Sandy Gerber  
*In memory of Phyllis Farmelant*  
*In memory of Saul Gerber*  
 Stu & Carol Gilbert  
*In memory of Sylvia Gilbert*  
*In memory of Morris Gilbert*  
 Jerry Gillis  
*In memory of Barbara Gillis*  
 Esther Goldberg  
*In memory of Jennie Morrison*  
*In memory of Morris Morrison*  
*In memory of Samuel Morrison*

Honey Goldman  
*In memory of Max Hechtkop*  
*In memory of Edward Goldman*  
 Marcelle Gorrivan  
*In memory of Armand Bohbot*  
 Michael & Thea Greene  
*In memory of Davina Greene*  
*In memory of Rose Asquith*  
 Helen Isenman & Susan Isenman  
*In memory of Molly Isenman*  
*In memory of Rebecca Rose Levin*  
*In memory of Hilda Levin Gold*  
 Larry & Wendy Kane  
*In memory of Maurice Kane*  
 Phil & Elizabeth Levinsky  
*In memory of Evelyn Zaitlin*  
 Larry & Joan Levy  
*In memory of Irving Remar*  
 Burt & Tama Loudon  
*In memory of Mary Rossman*  
 Roberta & John McMahon  
*In memory of Newell Potter*  
 Bonnie Nelson  
*In memory of Donald J. Nelson*  
 Sam & Bette Novick  
*In memory of Violet Stern*  
*In memory of Sam & Annie Novick*  
 Stan Weiner & Judi Peddersen  
*In memory of their parents, Michael & Sophie Weiner*  
 Camilla Polisner  
*In memory of Joel Polisner*  
 Rodger & Eydie Pryzant  
*In memory of Howard Rosen*  
 Sherri Quint  
*In memory of Hilda Maher*  
 Eddie Richman  
*In memory of Morris Richman*  
 Steve Gleit & Dana Robbins  
*In memory of Bernard Gleit*  
 Shirley Rosen  
*In memory of Sol Binder*  
*In memory of Nannette Binder*  
*In memory of Murray Rosen*  
 Bruce Ruben  
*In memory of Sidney Kaplan*  
*In memory of Ellen Ruben*  
*In memory of Gladys Ruben*  
 Deborah Sabarra  
*In memory of Beverly Kalish*  
 Marilyn Sargent  
*In memory of Gertrude Kravitz*  
 Stephen & Lisa Schiffman  
*In memory of beloved parents, Blanche & George H. Schwartz*  
*In memory of Blanche Schwartz*  
*In memory of Philip Schiffman*  
 Howard & Iris Sherman  
*In memory of Mitchell Sherman*  
 Morty & Dorothy Shulman  
*In memory of Lillian Shulman*

continued >>

## SUPPORTING TEMPLE BETH EL

Contributing to the following TBE funds is a wonderful way to honor a loved one, commemorate a *yahrzeit* or celebrate a special event. To make a donation, please complete the form below and send it along with your payment to Temple Beth El. Every gift makes a difference - we appreciate your support!

- Adult Education Fund
- Annual Appeal
- Brotherhood Fund
- Building Fund
- David & Ethel Wilson Family Fund
- Education Director's Discretionary Fund
- Edward Weisberg Fund
- Endowment Fund
- General Fund
- Kadima Beth El (Hebrew School)
- Phyllis & Jonas B. Klein Fund
- Kiddush Fund
- Kol Yeladim Early Childhood Fund
- Koocher/Robinov Hebrew School Scholarship Fund
- Library Fund
- Temple Beth El Memorial Park Fund
- Molly Finkelman Choir / Music Fund
- Norman Finberg USY Fund
- Prayer Book Fund
- Rabbi's Discretionary Fund
- Sisterhood
- Technology Fund
- Yad L'Yad (Caring Committee) Fund
- Yahrzeit Fund

First & Last Name: \_\_\_\_\_

Telephone: \_\_\_\_\_

Email: \_\_\_\_\_

Address (street, city, zip): \_\_\_\_\_

(circle one) In honor of / In memory of: \_\_\_\_\_

Send acknowledgement to (name & address): \_\_\_\_\_

Check enclosed  Credit card: Visa / MC

Credit card #: \_\_\_\_\_

## DONATIONS & TRIBUTES

Edward & Debra Siegel

*In memory of Jules Abramson*

*In memory of Edith Nelson*

Jack & Carol Simensky

*In memory of Myer Simensky*

*In memory of Freda Griff*

George & Ruthanne Singal

*In memory of Louis Singal*

*In memory of Malka Singal*

Andre & Daniela Skalina

*In memory of Elizabeth Lissauer*

*In memory of Rudolf Slezak*

Elizabeth Spector

*In memory of Harold Carlin*

*In memory of Charles Young*

Stu & Steph Stern

*In memory of Saul E. Gerber*

Don & Ellen Ward

*In memory of Sidney Lerman*

Jon & Susan Young

*In memory of Howard Young*

YOUTH ACTIVITY FUND

Alan & Linda Kaufman

*In honor of Ivan & Sue Most's 50<sup>th</sup>  
wedding anniversary*

## KEVER AVOT

Annual Community  
Cemetery Visits

**Sunday,  
September 21, 2014**

**10:00 am**

**Mt. Sinai Cemetery**  
Hicks St., Portland

**11:30 am**

**TBE Memorial Park**  
Outer Congress St., Portland

It is customary to visit the graves of parents and other close relatives in the month of Elul. The prayers of the Days of Awe are filled with imagery of who shall live and die, and the hope is that a visit to the cemetery during this period of self examination, to touch base, so to speak, with the lives and influence of those who have gone before us will be enlightening and inspiring.

It is also a time to share stories and recall the good qualities and *mitzvot* (good deeds) of departed family members.

## PORTLAND CHEVRA KADISHA



*In time of need,  
one Jew caring  
for another*

### JEWISH FUNERAL HOME

PreArrangement Counseling

471 Deering Avenue  
Portland, ME 04103

207•774•3733

[portlandjewishfuneralhome.org](http://portlandjewishfuneralhome.org)

HAND ROLLED

BAKED DAILY



**Bagels, Lox, Dairy & Vegan Spreads**

**147 CUMBERLAND AVE.**

**UNIONBAGEL.COM**

**207.747.4400**

**Call us for catering.**

**Now Proudly Serving Temple Beth El**

### SHOFAR SUBMISSION DEADLINE for the November - December 2014 issue: Monday, October 6, 2014

Please submit material via e-mail as text in the body of the message or as an attached Microsoft Word document to [events@tbemaine.org](mailto:events@tbemaine.org). Temple Beth El reserves the right to edit all material.

## MEMBERSHIP BUSINESS DIRECTORY

### *Support our members*

Need a car, a therapist, or perhaps an attorney or realtor? Temple Beth El members are a great business resource.

Promote your business in our Member Business Directory for just \$36 for the year.

Contact TBE at 774-2649 for more information.



Barbara Peisner, LCSW  
Licensed Clinical Social Worker

96 India Street  
Portland, ME 04101  
207.772.2202

[www.clearwaterpsychotherapy.com](http://www.clearwaterpsychotherapy.com)

Individuals, Couples

depression, anxiety, perinatal  
mental health, bereavement,  
hypnotherapy

NOW YOU'RE THINKING GREEN!!

**PATRIOT  
SUBARU**



**Route One, Saco**  
**www.patriotsubaru.com 1-866-284-7900**

### CLINICAL COUNSELING ASSOCIATES OF MAINE. P.A.

H. MICHAEL ALPREN, L.C.P.C., L.M.F.T., ESQ.  
INDIVIDUAL & COUPLES PSYCHOTHERAPIST



*My Legal Practice is Limited to gratuitous Divorce law Consultations for the sole benefit of my Clinical clients, as well as the Practices, Procedures and Processes of our Judicial system therein.*



1863 Washington Avenue  
Portland, Maine 04103-1625

Telephones: (207) 797-7900  
(207) 576-8580

שנה טובה ומתוקה

*Wishing you  
a joyous & sweet new year*  
5775



All are welcome at our High Holiday services:

- EREV ROSH HASHANAH                      Wednesday, Sept. 24 at 7:30 pm
- ROSH HASHANAH                              Thursday, Sept. 25 & Friday, Sept. 26  
beginning at 8:30 am
- EREV YOM KIPPUR, Kol Nidre              Friday, Oct. 3 at 5:40 pm
- YOM KIPPUR                                      Saturday, Oct. 4, beginning at 8:30 am

**EGALITARIAN • WELCOMING • NO TICKETS REQUIRED**

See the High Holiday Schedule of Services flyer for the complete listing of service times,  
or visit our website at [www.tbemaine.org](http://www.tbemaine.org).





HIGH HOLIDAYS 5775 | 2014  
SCHEDULE OF SERVICES

**SATURDAY, SEPT. 20**

9:30 am Shabbat Services  
7:25 pm Havdalah  
8:00 pm Special Selichot Service

**SUNDAY, SEPT. 21**

9:00 am Morning Minyan, Kadima Beth El  
*Kever Avot* - Annual Community Cemetery Visits:  
10:00 am Mt. Sinai Cemetery, Hicks St., Portland  
11:30 am TBE Memorial Park, Outer Congress St., Portland

**WEDNESDAY, SEPT. 24 - Erev Rosh Hashanah**

6:16 pm Candle lighting time  
7:30 pm Ma'ariv (Evening Service)

**THURSDAY, SEPT. 25 - First Day Rosh Hashanah**

8:30 am Shacharit (Morning Services)  
9:20 am (approx.) Torah Reading  
10:45 am Birkat Yeladim (Blessing of the Children,  
ages 0-2 yrs) - Main Sanctuary  
10:55 am Shofar Blowing - Main Sanctuary  
11:00 am (approx.) Sermon  
11:20 am (approx.) Musaf

**For families and children:**

9:30 - 10:40 am Rosh Hashanah Family Service with Rabbi Braun  
(for children grades 1-7) in Rm 4  
10:00 - 10:40 am Children's Activities (for newborn - K) - Room 3  
11:00 - 11:45 am Rosh Hashanah Activities (for grades 1-7) - Rm 4

5:30 pm Tashlich Service at Jewell Falls  
7:23 pm Candle lighting time  
7:30 pm Ma'ariv (Evening Service) at TBE

**FRIDAY, SEPT. 26 - Second Day Rosh Hashanah**

8:30 am Shacharit (Morning Services)  
9:20 am (approx.) Torah Reading  
10:45 am (approx.) Sermon  
11:15 am (approx.) Musaf

**For families and children:**

*See same schedule as first day of Rosh Hashanah (above)*

5:30 pm Shabbat and Holiday Services  
6:12 pm Shabbat candle lighting time

**SATURDAY, SEPT. 27 Shabbat Shuva**

9:30 am Shabbat Services  
7:10 pm Havdalah time

**SUNDAY, SEPT. 28 Tzom Gedalia (Fast)**

9:00 am Morning Minyan

**FRIDAY, OCT. 3 - Erev Yom Kippur**

5:40 pm Kol Nidre Service  
6:00 pm Holiday candle lighting time

**SATURDAY, OCT. 4 - Yom Kippur**

8:30 am Shacharit (Morning Services)  
9:20 am (approx.) Torah Reading  
10:45 am (approx.) Sermon  
11:15 am (approx.) Musaf

**SATURDAY, OCT. 4 - Yom Kippur (continued)**

**For families and children:**

9:30 - 10:40 am Yom Kippur Family Service with Rabbi Braun  
(for children grades 1-7) in Rm. 4  
10:00 - 10:40 am Children's Activities (for newborn - K) - Room 3  
10:40 - 11:30 am Yom Kippur Activities (for grades 1-7) - Rm 4

3:30 pm Adult Limud (Study Session)

4:30 pm Yizkor  
5:00 pm Mincha  
6:00 pm Ne'ilah  
6:40 pm Ma'ariv (Evening service)  
7:00 pm Fast Ends, Shofar Blowing

**SUNDAY, OCT. 5**

9:00 am Morning Minyan  
9:30 am-12:00 noon Build & Decorate the Sukkah

**WEDNESDAY, OCT. 8 - Erev Sukkot**

5:51 pm Candle lighting time

**THURSDAY, OCT. 9 - First Day of Sukkot**

9:30 am Shacharit (Morning Services)  
followed by lunch in the Sukkah  
6:50 pm Candle lighting time

**FRIDAY, OCT. 10 - Second Day of Sukkot**

9:30 am Shacharit (Morning Services)  
5:30 pm Shabbat and Holiday Services  
5:47 pm Shabbat candle lighting time

**SATURDAY, OCT. 11 - Chol Hamoed Sukkot**

9:30 am Shabbat services  
6:45 pm Havdalah time

**SUNDAY, OCT. 12 - Chol Hamoed Sukkot**

9:00 am Morning Minyan, Schmooze and Shmear  
9:00 am Kadima Beth El  
10:00 am Kol Yeladim (Early Childhood program, ages 0-3 yrs)  
12:00 - 2:00 pm Pizza in the Hut with KBE

**WEDNESDAY, OCT. 15 - Erev Shemini Atzeret**

5:39 pm Candle lighting time

**THURSDAY, OCT. 16 - Shemini Atzeret**

9:30 am Shacharit (Morning Services)  
11:15 am (approx.) Yizkor  
6:39 pm Candle lighting time  
7:00 pm Simchat Torah Service

**FRIDAY, OCT. 17 - Simchat Torah**

9:30 am Shacharit (Morning Services)  
5:30 pm Shabbat and Holiday Services  
5:35 pm Shabbat candle lighting time

**SATURDAY, OCT. 18**

9:30 am Shabbat services  
6:34 pm Havdalah time

# Israeli HONEY SALE

Sweeten your Rosh Hashana with Israeli honey!  
The Temple Beth El Gift Shop is pleased to offer all natural,  
pure and delicious wildflower honey from  
Kibbutz Ein Harod for the High Holidays.  
Makes a perfect holiday gift! Kosher pareve.  
Each elegant 9 oz jar comes with a Shana Tova gift tag.  
**\$12 each.**



**LIMITED QUANTITY AVAILABLE.**

Available in the TBE front office between Sept. 15 - 22.



Deluxe  
**LULAV & ETROG**  
Set - \$44

Place your order  
through the  
TBE office  
by Tuesday,  
September 16<sup>th</sup>

Shake things up with a

**LULAV & ETROG**  
set!

'And you shall take...the fruit of the Hadar tree (i.e. *etrog*), branches of the palm tree (i.e. *lulav*), boughs of leafy trees (i.e. myrtle), and willows of the brook, and you shall REJOICE before the Lord your God seven days.' ~ *Leviticus 23:40*

**Order your Lulav & Etrog set for Sukkot, to fulfill the special holiday mitzvah of the daily blessing and waving of the Lulav and Etrog.**

Each deluxe set comes assembled with the *Lulav*, *Haddasim* (myrtle) and *Aravot* (willow) in a holder, and the *Etrog* (citron) in its own box. The set includes a guide with blessings and customs for using the Lulav and Etrog.

# ISRAELI HONEY Payment Form

---

Honey will be available for pickup in the TBE office from September 15-22. Questions? Call (207) 774-2649.

First & Last Name: \_\_\_\_\_

Address & zip: \_\_\_\_\_

Number of jars @ \$12 each: \_\_\_\_\_ TOTAL: \$ \_\_\_\_\_

Telephone number: \_\_\_\_\_

Email: \_\_\_\_\_

Check enclosed. (Please make checks payable to Temple Beth El.)

Credit card (circle one): Visa    Mastercard

Credit card number: \_\_\_\_\_

Expiration date: \_\_\_\_\_



# LULAV & ETROG SET ORDER FORM

---

Return this form to the Temple Beth El office by Tuesday, Sept. 16<sup>th</sup>.

Lulav and Etrog sets will be available for pickup in the TBE office beginning Monday Oct. 6<sup>th</sup>. Questions? Call (207) 774-2649.

First & Last Name: \_\_\_\_\_

Address & zip: \_\_\_\_\_

Number of sets @ \$44 each: \_\_\_\_\_ TOTAL: \$ \_\_\_\_\_

Telephone number: \_\_\_\_\_

Email: \_\_\_\_\_

Check enclosed. (Please make checks payable to Temple Beth El.)

Credit card (circle one): Visa    Mastercard

Credit card number: \_\_\_\_\_

Expiration date: \_\_\_\_\_



## Temple Beth El invites you to participate in our annual High Holiday Food Fund Drive.

Since the purchasing power of a food pantry is considerably better than what we as shoppers can buy individually, we are asking for cash donations instead of food. We can play an important role in increasing the impact that our congregation can have in eliminating hunger in our community, and donating dollars is one of the best ways we can do this.

For your convenience, pre-addressed return envelopes will be available at the Temple during the holidays. Please make your check payable to "Temple Beth El" with "Food Drive" in the memo, and either drop it off at the Temple office, or mail it to the Temple. All funds will be distributed to the Jewish Family Services Food Pantry and Project Feed.

### Help end hunger in our community!



FOOD PANTRIES CAN PURCHASE 5 CANS FOR THE SAME COST OF 1 CAN PURCHASED AT THE GROCERY STORE





TEMPLE BETH EL

# BROTHERHOOD

## *Be one in a minyan!*

Temple Beth El Brotherhood is a dedicated group of men and women who are committed to providing a daily Sunday - Friday service so that there will be a *minyan* for those saying *Kaddish*, or for those who just want to attend our early morning prayer service. It is a great way to start the day and we need to continue the tradition, which is threatened by dwindling numbers during the winter season when many people are away.



You can support Brotherhood in several ways; either through an \$18 dues contribution, and/or by committing at least one day a week to attend the morning minyan service. Giving at least one day a week to attend the service is just as meaningful an investment as the dues and we ask that you consider committing yourself in this fashion.

### *In addition to morning Minyan services.....Brotherhood is involved.*

- We present each Bar/Bat mitzvah student with a lovely mezuzah
- We renovate the small chapel as needed by:  
Purchasing new blinds • Replacing the carpet • Purchasing a beautiful Ark • Recovering the chairs • Adding a tallit holder • Other ongoing projects
- We prepared new morning prayer books
- We support charities

Your support of Brotherhood will help us continue these endeavors.  
If you have any questions, please contact Fran Jacobson at tel. (207) 773-8972.

**TEMPLE BETH EL BROTHERHOOD  
ANNUAL DUES 2014-2015: \$18**

**Remit to: Fran Jacobson, 41 Jeanne Street, Portland, ME 04102**

- I am a member of TBE Brotherhood. Enclosed is my check for \$18.
- I would like to join TBE Brotherhood. Enclosed is my check for \$18.
- I would like to make a contribution to TBE Brotherhood. (Check enclosed.)
- I would like to commit to attending morning minyan at least one day each week.

**Name:** \_\_\_\_\_

**Address:** \_\_\_\_\_

**Phone:** \_\_\_\_\_

**WE APPRECIATE YOUR SUPPORT!**

# TEMPLE BETH EL SISTERHOOD

400 Deering Avenue  
Portland, Maine 04103

## ANNUAL DUES STATEMENT 2014-2015

Annual Dues	\$18.00
Senior Citizens (age 62 or over)	\$12.00

Please check the appropriate boxes below and mail, along with your check, to:

**Karen Farber**  
**93 Foreside Road**  
**Falmouth, Maine 04105**

**Checks should be made payable to: Temple Beth El Sisterhood**

----(cut here)-----

- I am currently a member of Sisterhood. Enclosed is my check for \$18.00. (\$12.00 for Senior Citizens age 62 or over)
- I am a *Life Member* of Sisterhood; and/or  I would like to make an additional contribution.
- I would like to join Temple Beth El Sisterhood. Enclosed is my check for \$18.00. (\$12.00 for Senior Citizens age 62 or over)
- I would like to make a voluntary contribution to Sisterhood with my enclosed check.
- I would like to become actively involved in Sisterhood activities.

**Name:** \_\_\_\_\_

**Address:** \_\_\_\_\_

**Phone:** \_\_\_\_\_

**THANK YOU FOR SUPPORTING SISTERHOOD!**