

OFFICERS OF BETH ABRAHAM SISTERHOOD



(left to right) Rhoda Bernstein, Financial Secretary; Louise Rolnick, President; Jo-Ann Kirstein, Recording Secretary; Louise Shindler, 2nd Vice President; Priscilla Williams, Treasurer.
Absent: Linda Hartstone, 1st Vice President; Janet Price, Corresponding Secretary.

PAST PRESIDENTS OF BETH ABRAHAM SISTERHOOD



(left to right) Barbara Podolsky, Norma Berg, Miriam Viner, Ruth Striar, Judith Cooper.
Absent were Lillian Salzman, Ida Gopan, and Janice Cohen.

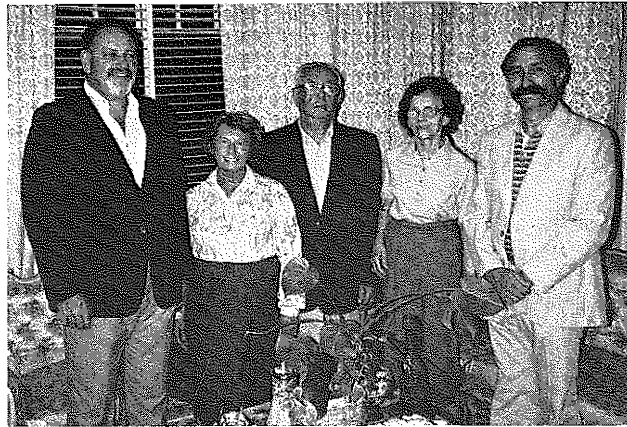
CHEVRA KADISHA

The origin of "CHEVRA KADISHA", which literally means "holy society", stems from the Talmud (some 1600 years ago). When a Jew in the community would die, it was the obligation and responsibility of each and everyone in the community to care for the deceased. With the formation of the CHEVRA KADISHA, however, the rest of the community became exempt, since the CHEVRA assumed the sole responsibility for preparing the deceased for the final resting place.

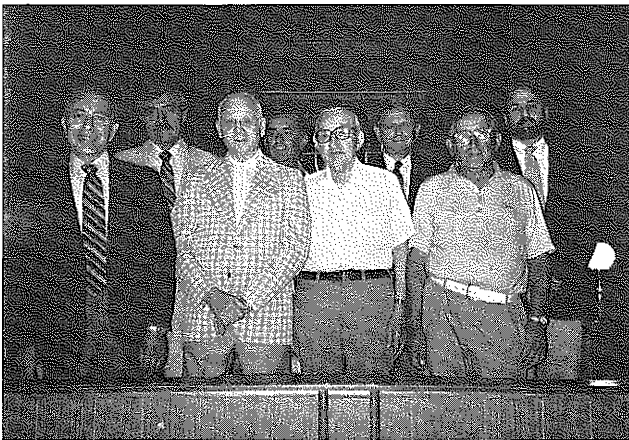
As years passed by it became the custom that children of the CHEVRA would replace their fathers as members of this society when their fathers passed away.

The CHEVRA KADISHA is also referred to as the "CHEVRAS G'MILUS CHESED VE'E'MES, "the society that deals with kindness and truth," for this is a true act of kindness since those who perform this duty do it without any ulterior motive.

Today in many cities the CHEVRA KADISHA has become somewhat commercialized. Here in Bangor, however, those women and men who are members of the CHEVRA still perform their most holy duty with "chesed shel-emes", "a kindness of truth."



*Active Synagogue Members ...
Left to right: Michael Rolnick, Ida Gopan, Sam Less, Ida Less, David Price.*



*The Men's Chevra Kadisha
Front row, left to right: Dr. Howard Berg, Abe Striar, Philip Striar, Phil Nissenbaum.
Back row: Martin Schneider, Ben Viner, Darrell Cooper, Jerome Kirstein.*



*The Women's Chevra Kadisha
Celia Segal, Shirley Schneider, Louise Rolnick
Absent: Bessie Wald, Nancy Offenber, Lillian Salzman*

A MESSAGE FROM THE FIFTIETH ANNIVERSARY COMMITTEE AND JOURNAL STAFF ...



The Journal Committee

(Left to right) Jo-Ann Kirstein, Louise Shindler, Sam Nyer, Roz Isaacs, Associate Editor Judy Cooper, Louise Rolnick, Barbara Podolsky, Editor Norma Berg.

Since the beginning, mankind has marked the passage of time in various ways. Marks on stone, rays of the sun, notches on sticks — all have measured the millenia. Our efforts here are certainly a miniscule moment, but we felt the occasion deserved the merit of mention. Fifty years in the life of a structure may not seem long when compared to buildings that have stood for more than a thousand years. But to the members of the Beth Abraham Congregation, it is fitting to now pay tribute to this house of worship. The changes that have been wrought on the building and those of its congregants are recounted elsewhere in this book. We who have planned this anniversary and its documentation have been privileged to serve. We will not belabor the frustration of gathering data, the countless meetings, and the constant urgings of our chairmen to complete the work on time. It has truly been a labor of love. We want to sincerely thank all who helped make this Journal a reality. A special thanks, also, to those who contributed to the financial success of this project.

We wish the Beth Abraham Synagogue a continued life of service to Jews in Bangor for many, many more years to come.

The Committee and Journal Staff

Howard Berg
Judy Cooper
Jo-Ann Kirstein
Barbara Podolsky
Louise Shindler
Steven Striar, Staff Photographer

Norma Berg
Roz Isaacs
Samuel Nyer
Louise Rolnick
Max Striar
Jerry Williams

