



HENRY PAUL
Initiated June, 1921
Merchant
Lumen



SIDNEY PAUL
Initiated October 26, 1923
Clothier
Ora
Chapter Letter Committee



JACK RAPAPORT
Initiated June 10, 1925
Student



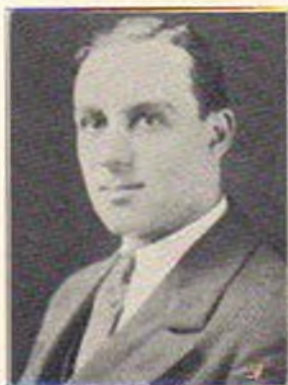
LOUIS A. ROLSKY
Initiated April 18, 1926
Student



BENJAMIN D. ROSEN
Initiated February 4, 1923
Manager Chain Grocery Store
Ossa
Chairman Social Committee
Chairman Letter Committee



MAX RUBEN
Initiated April 18, 1926
Student



ALBERT J. SCHIRO
Initiated 1921
Store Manager
Trustee



HAROLD S. SCHIRO
Initiated January 12, 1924
Student
Lumen



SIDNEY W. SCHIRO

Initiated 1921
Store Manager
Lumen, Trustee



SAMUEL SOLOMON

Initiated 1921
Student



MAURICE STONE

Initiated June 12, 1923
Student
(Class)



WILLIAM VINER

Initiated June, 1923
Shoe Business



CARL ZOLOF

Initiated 1927

Barber Supplies

MU SIGMA SPEAKS

*Yes, I am proud:
These sons you love are mine;
I fed them when but suckling babes,
Their ideals my design.
They know no fear, each one is true
And fine as purest gold,
They are my type of gentlemen,
Their character my mold—
Yes, I am proud.*

*Yes, I am proud:
Of each and every one;
Were you their father would you not
Be proud to call them "son"?
Not for their deeds I chose them,
Not for their fame or birth,
But because each knew what honor was
And each had proved his worth.*

*Proud, yes, and sad:
Some sleep in war's great field
Where bounteous poppies blossom
On the blood of their bodies' yield,
Theirs a merited slumber,
They died as real men should
In a cause that is just and worthy
And only as heroes could.*

*Yes, I am proud:
Through all these years, my name
They've guarded as a sentry does
Who bears his country's claim.
Each one a credit to himself,
My fears for them allayed,
The hopes placed in them all fulfilled,
My trust in them repaid—
Yes, I am proud.*

History of Alpha Omega Chapter

PORTLAND, MAINE.



OME ten years ago in Portland, Maine, a group of young men attending the Portland High School founded a local chapter known as Phi Sigma Fraternity. It was the first fraternal organization of its type in Northern New England. The men of this organization achieved prominence in the school. Amongst their number were class officers and others who gained distinction in athletic and social organizations in Portland. From this fraternity many men matriculated in the University of Maine, near Bangor, and these alumni there came in contact with those of the Omega Chapter of the Mu Sigma, who were likewise attending the University of Maine. These men quickly perceived the advantages to be gained through association with a national fraternity, and with the Omega Chapter as their sponsor and men of Omega acting as their initiators, the Phi Sigma Fraternity in June, 1927, became the Alpha Omega Chapter of Mu Sigma. The initiation of Alpha Omega was of benefit to both the new and the old Maine chapters. To Alpha Omega came the privilege and the inspiration of Omega's successful leadership. To Omega came a near and dear neighbor. This was evidenced by the fact that on October 23rd, 1927, the two chapters held a joint get-together banquet at Augusta, Maine, which was attended by approximately seventy men from both chapters despite the distance which these men had to travel. The affair was highly successful.

On October 29th, 1927, Alpha Omega gave a dance in honor of the Omega Chapter, following the Bangor-Portland football game in Portland. A large delegation of Omega boys attended. On Portland's football team that day Brothers David Diamon and David Shuman played.

For the past seven years the Alpha Omega Chapter as the Phi Sigma Fraternity gave an annual vaudeville and dance during Christmas week. This year the eighth of these presentations will be given under the auspices of the Alpha Omega Chapter of the Mu Sigma Fraternity.

Alpha Omega has quickly imbibed the spirit of Mu Sigma. It bids fair to rival the Omega Chapter as one of the best in the fraternity.

LAMPLIGHT
1926





Standing, left to right—

HAROLD BECKLEMAN
Initiated 1927
Student

WILLIAM BRNSTEIN
Initiated 1927
Student

EDWARD ALBLING
Initiated 1927
Student

MORRIS EDWARB
Initiated 1927
Student

HOWARD S. KASLIN
Initiated 1927
Furniture Manufacturer

JACK FINN
Initiated 1927
Student

SIDNEY IRVINE
Initiated 1927
Student

WILLIAM ZOLOF
Initiated 1927
Student

Sitting, left to right—

MITCHELL MILLER
Initiated 1927
Manager

LESTER SAPIRO
Initiated 1927
Student

DAVE DIAMON
Initiated 1927
Student

DAVE SHULMAN
Initiated 1927
Student

CHARLES FINKS
Initiated 1927
Student

JOSEPH DIAMON
Initiated 1927
Student

ROBERT LEROVITZ
Initiated 1927
Wholesale Fruits