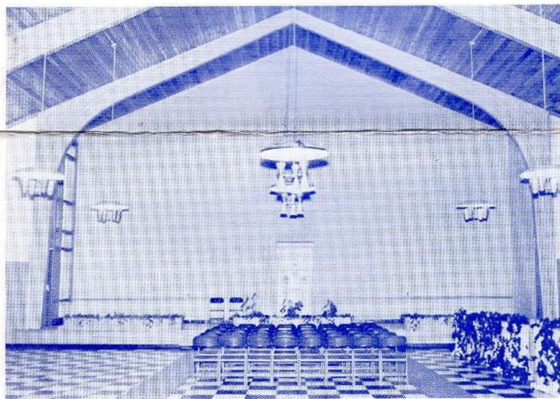


Completion Building Fund Campaign
PORTLAND HEBREW SCHOOL - SYNAGOGUE

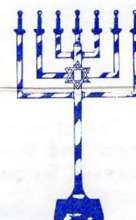
76 Noyes Street Portland, Maine

GOAL \$150,000.

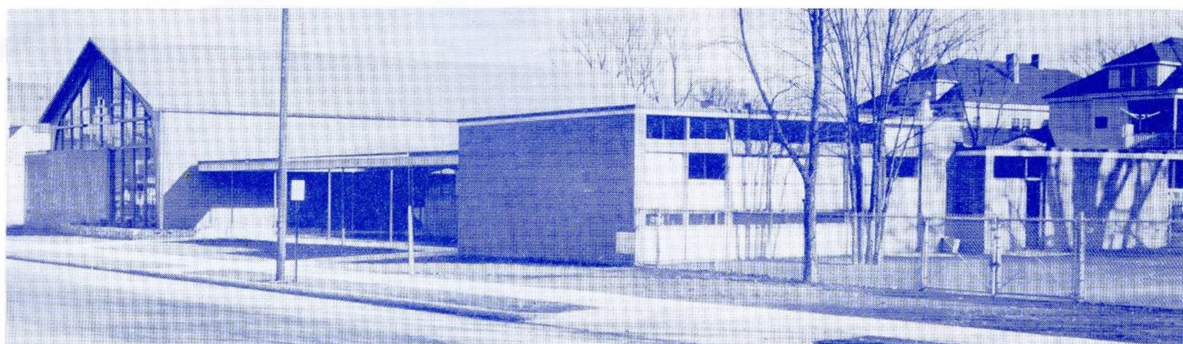
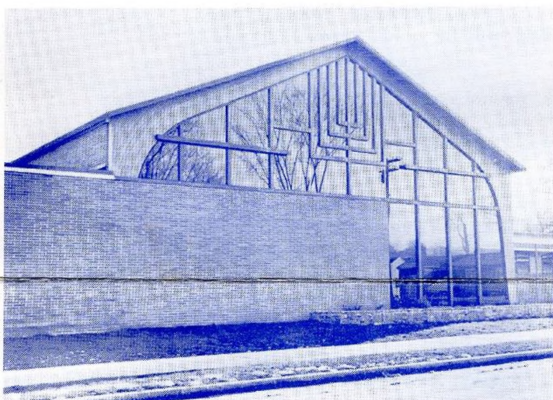
DECEMBER 1956



FIFTY YEARS... AND MORE



For more than fifty years the Portland Hebrew School has been the prime center of Hebrew education in Portland. Among its many graduates are men who today are leaders in all fields of Jewish community endeavor.





OUR DREAM HAS BEEN REALIZED

All of us can point with pride to our beautiful and serviceable new Hebrew School and Synagogue. It means the realization of a long cherished dream. However, we now must complete the payment of the cost.

To date, December 2, 1956, members and friends have pledged a total of \$110,000, but we need an additional \$150,000 to pay off the cost of the building and to properly equip and furnish it. We need proper seating facilities; equipment for the kitchen; playground; classrooms; our offices, etc., etc.

Therefore we are now engaging in a Completion Campaign, asking our members to sign an additional pledge, payable over three years, beginning January 1, 1957. In this campaign we are stressing Memorials for our departed loved ones and Dedications to honor the living. With G-d's help we have faith to believe we can raise the necessary sum. A faithful, dedicated group of our men have resolved that this must be done and will be done. Soon they will call upon you for your gift.

In our previous campaign many members did not contribute to the building fund. For such this is a great opportunity to share with G-d in the cost of a building enjoyed by us all and where we and our children regularly receive inspiration and instruction in traditional Judaism.

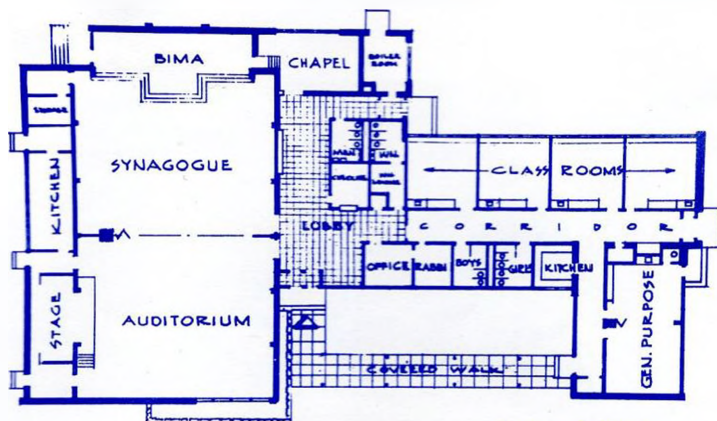
This campaign will close December 24. This is an ideal time for us to give, with the spirit and meaning of our precious Chanukah in our hearts and in our homes. All who subscribe a minimum of \$500 will have their names cast in permanent bronze on a Memorial Plaque, where generations to come, grand children and great grand children, will view their names as contributors to the cost of our new edifice. We ask you to give generously in proportion to your income.

May the Almighty bless those who unite to build houses of worship and study; and those who enter therein to pray and learn.



MEMORIALS AND DEDICATIONS

Chapel - Library	\$ 6,000
Neir Tamid - Chapel	
Oren Kodesh - Chapel (includes library shelves)	1,500
Sanctuary	12,500
Auditorium - Social Hall	12,500
Oren Kodesh - Sanctuary	
Neir Tamid - Sanctuary	12,500
Pulpit Chairs of Sanctuary @ \$1,100 each	6,600
Rabbi's, President's, Chairman of Board of Director's, Honored Guest, Cantor's	
Main Entrance to Synagogue	5,000
Main Lobby of Synagogue	5,000
Main Kitchen	10,000
(10 gifts of \$1,000 each)	
Founder's Plaque	\$500
Each Name	
Landscaping and 2 Flagpoles	2,000
Piano for Auditorium	1,000
Hebrew School Classrooms - 4 @ \$5,000	20,000
Main Office	1,500
Rabbi's Study	2,000
General Purpose Room (Each class, \$3,500)	6,000
Children's Kitchen and Furnishings	2,500
Ladies and Bridal Lounge	2,000
Cloak Room	1,500
Bulletin Boards	
School	750
Main Lobby	1,000
Playground and Patio	2,500
Playground Entrance to School Lobby	1,000
Main Entrance to School and Lobby	5,000
Esplanade	2,500
Doors from Parking Lot —	
To Social Hall	1,000
To Main Kitchen	750
To Main Kitchen	750
Menorah in Chapel	1,000
Menorah in Sanctuary	2,000
Neir Tamid For Children	1,500
Schulchan (Scroll Tables)	
Main Sanctuary	1,500
Chapel	1,000
Children's	1,000
Portable Oren Kodesh for Children	2,500
Rabbi's Pulpit	1,500
Amud in Chapel	1,000
Menorah for Children	1,000



FLOOR PLAN

OUR CAMPAIGN LEADERS AND WORKERS

Rabbi Morris Bekritsky

William Goodman

A. S. Levey

Honorary Chairmen

Arnold Goodman

Bertram Silverman

Campaign Chairmen

Samuel J. Cohen

Treasurer

Louis Levey

Secretary

Big Gifts Co-Chairmen

Samuel J. Cohen

Charles Glick

William Goodman

General Gift Co-Chairmen

Dr. Daniel Kornetsky

Harold Ross

Maurice Rubinoff

Jack Schwartz

Dr. Harold Woolf

Campaign Committee

Jules Abramson

Gerald Boxstein

Hyman Boxstein

Nathan Chandler

Samuel Cinamon

William Cohen

Joseph Cope

Meyer Cope

Morris Cox

Benjamin Glick

Charles Glick

Myer Gordon

Jules Greenstein

Ben Hagai

Joseph Hirshon

Dr. Daniel Kornetsky

Joseph Modes

William Punsky

David Rosengard

Harold Ross

Campaign Committee

Irving Rothstein

David Rubinoff

Maurice Rubinoff

Jack Schwartz

Abraham Seigal

Samuel J. Shatz

Louis Shelling

Saul Sheriff

Jack Silver

Gerald Slivka

Morton Slosberg

Joseph Taylor

Arthur M. Waterman

Bennett C. Webber

Maxwell L. Wiesenthal

Dr. Harold Woolf

Lawrence Young

Bernard Zade

Rev. Samuel Zimelman

