



Welcome to Temple Beth El of Augusta, Maine

embracing a spirit of community, lifelong Jewish learning, commitment to inclusiveness, and active participation in Jewish life in Central Maine

artwork by Lenora Leibowitz

Tevet-Shevat-Adar 5779/Jan.-Feb. 2019

From the desk of Rabbi Asch

Our synagogue is called Temple Beth El. The Hebrew, *Beit El*, means house of God. I'm not sure what our founders were thinking when they picked that name, but I imagine that they were envisioning that everything that happened our building from services to Torah study, from religious education to community gatherings, would help to manifest God's presence in our world. We might say that we hope every action we do in our sacred space helps to bring a little more goodness into the world, thus bringing God's presence nearer to us as we draw nearer to one another.



TEMPLE BETH EL
Woodlawn Avenue

In Hebrew there are actually three words for synagogue. A synagogue is called a *beit midrash*, a house of study. From ancient times our ancestors have gathered in these buildings to study. They were often the only place in town where copies of the Torah and Talmud could be studied. Today we carry on that tradition of learning with our Torah study, our Soup and Study, and, of course, our Hebrew School. As the 'people of the book,' we understand the importance of engaging with our ancient texts.

A synagogue is also called a *beit t'filliah*, a house of prayer. I imagine that today many of us think of a synagogue as primarily this—a place where we gather to welcome in Shabbat and to celebrate as our young people become *b'nai mitzvah*. Prayer is a cornerstone of who we are and what we do as Jews, and we all know the importance of being able to say *kaddish* as we remember a loved one and finding a place to pray at the end of a difficult week.

A synagogue is also called a *beit k'neset*, a house of assembly. [In fact, *synagogue* come from the Greek word meaning assembly.] We gather in our building for community events—wine tastings, baby namings, teen programs, etc.. We host interfaith meetings, community lectures, and a Learning English Through Cooking class. Whatever we do in our building—study, pray or assemble—we create community. Our congregation is only as strong as our connections to one another and those connections are built in our sacred space.

As you will read in detail on pages 4 and 5, it is time to renovate our building. This renovation will allow our space to reflect the desire our community has to learn, pray, and gather as one. The *bimah* and building will be accessible, serving the needs of all our members and reflecting our value that all people are part of our community. It will allow for a more intimate prayer space, with more room for our larger services. We will have a dedicated function space. Our prayer space will be beautified with the addition of a stained-glass window. I am thrilled that artist Nancy Katz and Mark Leibowitz will be creating a window we can enjoy for generations to come (see page 14). This is an exciting new project that will enable us to have a space which is truly a *beit midrash*, a *beit t'filliah*, a *beit kneset*, and a *Beit El*. I look forward to seeing many of you at our community meeting on February 10th at 11am where we will discuss our plans in detail. May the work that we do in the coming months strengthen our community and connections for years to come.

TBE Schedule: January—February

Services

Friday, January 4

7:00pm Shabbat Service

Saturday, January 19

10:30am Shabbat in the Wild

Friday, January 25

6:00pm Shabbat Service

7:00pm Potluck Dinner

Saturday, February 2

10:30am Shabbat Service

~12:15pm Kiddush Lunch

Friday, February 8

6:00pm Shabbat Service

7:00pm Potluck Dinner

Saturday, February 9

9:00am Tot Shabbat

Friday, February 22

7:00pm Shabbat Service

Torah Study

Saturday, January 5

10:30am Torah Study & Kiddush Lunch

Saturday, January 26

10:30am Torah Study & Kiddush Lunch

Saturday, February 9

10:30am Torah Study & Kiddush Lunch

Saturday, February 23

10:30am Torah Study & Kiddush Lunch

Hebrew School

9:30 am on Sunday, January 6, 13, 20, & 27

9:30am on Sunday, February 3, 10, & 24

NO HEBREW SCHOOL ON FEBRUARY 17!

TBE Activities

Monday, January 14

6:00pm TBE Board Meeting

Monday, January 28

5:30pm Soup & Study

Wednesday, February 6

5:30pm Soup & Study

Sunday, February 10

11:00am Community Forum on the Renovation

Tuesday, February 12

5:30pm TBE Book Club

Wednesday, February 27

5:30pm Soup & Study

Interfaith Activities

Every Tuesday

12:30pm Volunteering at Addie's Attic

Monday, January 21

9:00am Martin Luther King Program, Winthrop

Thursday, January 10

1:00pm Interfaith Study

Thursday, February 14

11:00am Interfaith Study

Mazal Tov!

Mazal tov to grandma Li'el Boudreau, parents Robbie and Rebecca Stevens and big sister Abigail on the birth of Hannah Joy. All are invited to the baby naming Sunday, January 6th at noon.

Your Rabbi in Action!



The last two months of 2018 were a whirlwind! November began with a powerful Shabbat service that brought more than 200 people to the temple to support our community after the Pittsburgh tragedy. Rabbi Asch attended three national conferences, spoke at several community events, presided over TBE's hard-fought Mensch Madness tournament, led havdallah services, and made time for a family vacation in Puerto Rico (which included a visit to San Juan's Reform synagogue).



It's Time: A Renewed Synagogue for Central Maine's Jewish Community

Community Forum on the Building Project

11:00 - 12:30pm on Sunday, February 10th

By Jerry Bley

The Temple Beth El building was constructed in 1954. Although minor repairs and cosmetic changes, such as new carpets and painting, have been completed over the decades, no major improvements or renovations have been undertaken.

The time has come to address significant problems and needs:

- **substantial deferred maintenance**, including replacement of the roof, siding, and furnace;
- **lack of accessibility** to the bimah, bathrooms and entrance for people with mobility impairments;
- **lack of insulation** and inefficient heating and cooling systems in both the Temple and Schuman Center;
- **modifications to the building layout to improve functionality and security** including a redesigned entrance area, function space independent of the sanctuary, a modestly updated kitchen, additional exterior lighting; and
- **attractive landscaping** throughout the TBE "campus" including a patio behind the Temple.

In 2016, a Design Committee, with the pro bono services of architect Peter Bethanis began the process of developing a plan to address these needs. In its early deliberations, the Design Committee considered the possibility of reorienting the synagogue to face east as is Jewish tradition. The Committee discovered that this reorientation not only created a more intimate setting for services, it also facilitated bimah access and freed up the function space so that it would no longer be needed for sanctuary seating. Additional design changes include installation of a stained glass window in the sanctuary and reconfiguration and enlargement of the entrance area (exterior and interior).

See Building, pg. 5



What's Happening at TBE

Building, cont. from pg. 4

While the renovation will provide for many new features, a concerted effort has been made to maintain familiar features including:

- The ark and cabinetry on the bimah will be preserved and moved to the eastern wall of the sanctuary;
- The interior of the sanctuary with its beams, paneling, and lighting; and
- The preservation and relocation of existing exterior doors.

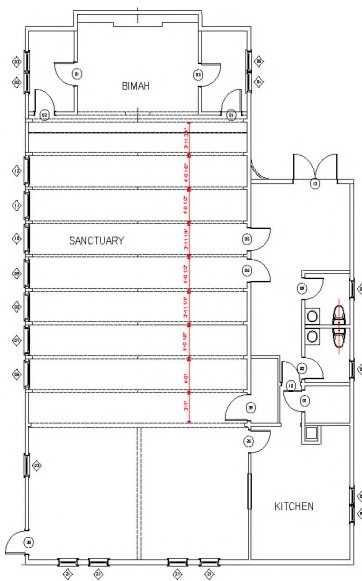
If fundraising efforts prove successful, we plan to initiate construction in June 2019 and complete the renovation (other than landscaping) prior to the High Holidays in 2019.

The total cost estimate for the project is \$312,000:

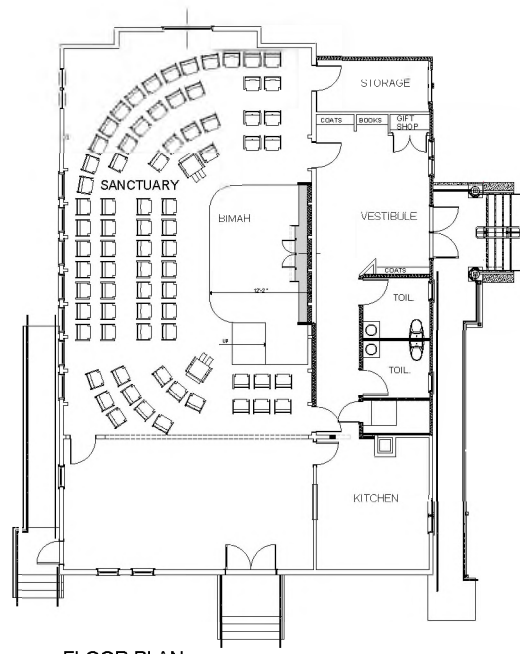
- \$262,000 for renovations to the synagogue building
- \$20,000 for a new heating and cooling system at the Shuman Center
- \$30,000 for landscaping (including improvements to the parking area, walkways, and the addition of a patio).

A Building Fundraising Committee, headed up by Fran Rudoff, has begun approaching individuals for lead gifts with plans to solicit the full membership in February. Special naming opportunities are available. Gifts in memory of loved ones or in honor of special people are welcome and encouraged. Anyone interested in learning more about the naming opportunities and supporting this important project is encouraged to contact Fran to arrange a meeting at frudoff@gmail.com.

To learn more about the Temple's building plans, TBE members and friends are invited to attend a community forum scheduled for Sunday, February 10 at 11:00 AM.



Existing floor plan



FLOOR PLAN

New floor plan

17th Annual Shabbat in the Wild
Saturday, January 19, 2019

Join Susan Bakaley and Chris Marshall for our seventeenth annual

Shabbat in the Wild

Dress for the weather, wearing boots and layers. Bring warm hats and gloves or mittens and snow shoes, if you have them, as well as some birdseed or bread crumbs. Skis don't work well on these trails. There will be a dairy potluck lunch at the house. Bring a favorite tree fruit to share for our dessert.

Contact Rabbi Asch for carpooling from TBE.

**For more information, directions and RSVP contact: Susan & Chris
wiserock@fairpoint.net or 589. 4632**

21st ANNIVERSARY WINE TASTING

Saturday, February 2, 2019

PLEASE DONATE FOR THE SILENT AUCTION!!

This year's theme, "South of the Border," promises to bring warmth and light to a Maine winter night! Our beloved sommelier, Syd Sewall, is selecting a range of appropriate vintages and the tasting will be accompanied by a yummy taco bar. We are thrilled to welcome back the musical stylings of **Ethan Bessey's band, the Waydowns!**

To once again make this an even more robust fundraiser for the Temple, we are bringing back the **Silent Auction** as part of the event **AND WE NEED YOUR CONTRIBUTIONS!!!** Please think creatively about donations. It would be fun to have some items that match our theme. Our goal is to feature at least 50 items, with a wide range of bidding opportunities, so we need many members to help out!

Some things to consider include:

- **Treasures:** art, crafts, jewelry, sports or other memorabilia, a bottle of vintage wine, a themed "South of the Border" gift basket, etc.
- **Food:** chocolates or coffee from a "South of the Border" country, jams (hot pepper?), jellies, cookies, pies, cakes – you know what people like!
- **Experiences:** gourmet or themed dinner at your home; tickets to sports events; tickets to music, dance or theater performances; use of a vacation home; ski passes; a guided hike; a round of golf at your course, a boat ride, a canoe trip, a VIP tour of a special place; etc.
- **Services:** music or art lessons; pet sitting; babysitting; a photo shoot; graphic design (business cards, web site, etc.); legal or financial consultation

We would love to know about your donation commitment and have all items at the Temple by Sunday, January 13, 2019. Please drop off your items during regularly scheduled events (i.e. services or Hebrew School, etc.) or during regular TBE office hours.

To help us plan, please complete the donation form on page 8 and send/email to Fran Rudoff ASAP:
PO Box 71, Litchfield, ME 04350 or
frudoff@gmail.com (212-9544)



**Temple Beth El 2019 Wine Tasting
February 2, 2019
SILENT AUCTION!**

Please help make the Silent Auction for the **21st annual wine tasting** the best ever by making a donation! Please think creatively about donations - art, crafts, jewelry, baked goods, experiences (dinner at your home), tickets to sports events or performances, use of a vacation home, ski passes, a round of golf at your course, a boat ride, a canoe or kayak trip, music or art lessons, a VIP tour, pet sitting, baby sitting, sports or other memorabilia, a bottle of vintage wine, a themed gift basket, a photo shoot, etc.

Please complete this donation form and send/email to Fran Rudoff as soon as possible, but **no later than January 13, 2019.**

PO Box 71, Litchfield, ME 04350 or frudoff@gmail.com, 207-582-3826

Name of Donor: _____

Name of Contact, if business: _____

Address: _____

Telephone Number: _____

Email Address: _____

Description of Donation Item:

Suggested Value: _____

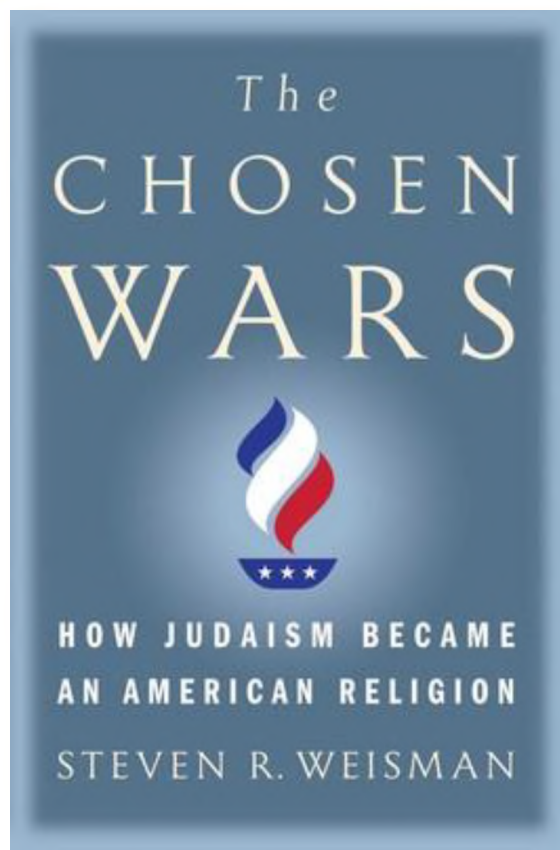
Auction donations should be dropped off at the Temple by Sunday, January 7, 2018. If items need to be picked up, please provide details:

If the item is a gift certificate, will you provide the certificate and promotional material for the auction? ____yes ____no If no, how will we receive the certificate? _____

Note: No goods or service were provided in exchange for this charitable donation, allowing the value of the contribution to be tax deductible to the full extent allowed by law.

Temple Beth El * PO Box 871 * Augusta, Maine 04332 * 207-622-7450
bethelaugusta@gmail.com

What's happening at TBE



TBE Book Club

Tuesday, February 12

5:30-7:00pm

The Chosen Wars:

How Judaism Became an American Religion
by Steven R. Weisman

The Chosen Wars is the important story of how Judaism enhanced America and how America inspired Judaism.

"American Judaism underwent a radical shift in the 19th century, adapting its rituals and its theology alike for an open, modern society. Weisman offers a thorough and fascinating history of these decades, which gave birth to the liberal branches of Judaism and allowed Jews to feel at home and thrive in America."
New York Times Book Review (Editors' Choice)

Save the date!

Soup and Study

with Mel Weiss

Topic: TBA

Wednesday February 6th

5:30-7:00pm

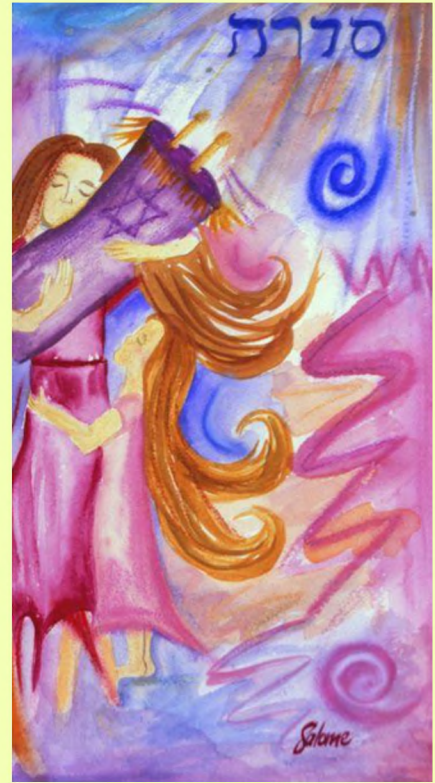
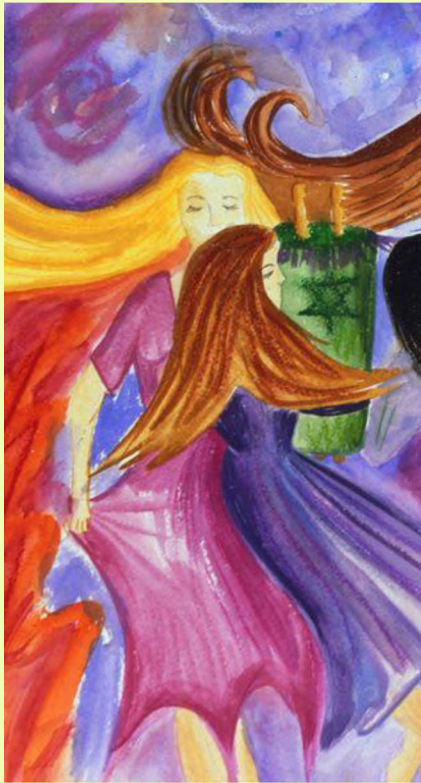
Soup & Study

with Beth Cooper Benjamin

Monday, Jan. 28th

5:30-7:00pm

Beth Cooper Benjamin serves as a vocal advocate for girls in the Jewish communal world. In addition to co-facilitating Ma'yan's participatory action research with Jewish teen girls, Beth has worked extensively with single-sex programs for adolescent girls, both as a researcher and a practitioner. She has also consulted and conducted trainings for girl-serving organizations including the Girl Scouts of the U.S.A.



SOUP AND STUDY

Women in Judaism with Beth Cooper Benjamin

JOIN FOR A DELICIOUS DINNER AND STUDY
AND DISCUSSION OF JEWISH TEXTS

MONDAY JANUARY 28TH 5:30-7:00PM
TEMPLE BETH EL
PLEASE RSVP TO THE OFFICE SO WE HAVE ENOUGH
FOOD!

TEMPLE BETH EL, AUGUSTA

Weekend with Natalie



JANUARY 19TH-21ST, 2019



Saturday the 19th:
Shabbat in the Wild

Sunday the 20th:
*Hebrew School Tu B'Shvat Seder @ 11:00am
(everyone welcome!)*

*Martin Luther King Jr. Program @ 6:00pm
in the Chapel at Colby College*

Monday the 21st:
*Leading Tu B'Shvat Seder at the "Seeds of
Justice" Interfaith Service, Monday January
21st from 9-11am at the Winthrop
Congregational Church*

Martin Luther King Day 2019

Seeds of Justice:

An Exploration of Ecological Interdependence



* An interactive Tu BiSh'vat seder explores our place within the Earth community

* Representatives from the Poor People's Campaign discuss Dr. King's legacy with a focus on Earth justice

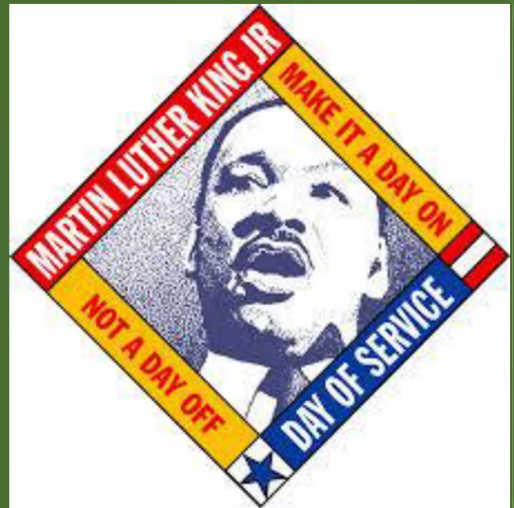
Food will be served during the program.

Arrive by 8:45am. We will start at 9am sharp.

Donations accepted to support the Poor People's Campaign Maine

Monday, January 21st
9am-11am

Winthrop Congregational
Church
10 Bowdoin St, Winthrop
(Next to Kennebec
Savings Bank)



Sponsored by: Winthrop Area Ministerial Association
& Capital Area Multifaith Association

What's happening at TBE

Project Zug Online Partnership Learning presents

A FOOD TOUR OF THE TALMUD

SELF-PACED ONLINE COURSE
WITH A STUDY PARTNER

Starts February 3, 2019
with a launch party at
Beth Israel Congregation - Bath

Co-sponsored by
The Center for Small Town Jewish Life
and the Jewish Community Alliance



Food is a powerful force at the center of ritual, community, and ethics. This class will explore all these aspects of food by studying passages on food found across the Talmud. Jumping into the lively debate of Talmud will pave the way for rich discussion to affirm, challenge, and transform our own approaches to food. This online course is facilitated by Rabbi Aviva Richman of The Hadar Institute, New York.

How this course works:

Sign up with Project Zug to gain access to the full course materials when the course launches on **February 3**. You'll learn online with a *chevruta* - a traditional-style study buddy. You can either list your study partner when you register, or write "Match Me" to have us pair you with another Mainer! **We'll have a kickoff event at Beth Israel Congregation in Bath on February 3rd from 1:30-3:00 pm, and a siyyum (a capstone event) at this June's Maine Conference for Jewish Life in Waterville.**

What do you need?

You'll need a computer with internet connectivity (a camera is very helpful), a *chevruta* (which we can provide you), and the desire to engage meaningfully with Jewish texts!

No prior experience with text study or chevruta learning?

No problem! The Project Zug experience ensures that this curated material will be explained by renowned teachers. This 10-week course can take the 10 weeks allotted - or you and your partner might take a slower pace. This is an amazing opportunity to build our Maine Jewish community through traditional learning.

We're excited to offer a special scholarship opportunity to the first 20 registrants for this program! Use code First20 in your registration for an amazing 50% discount off of the \$36 tuition fee, for first 20 registrants only.

Questions? Email Melanie Weiss at maweiss@colby.edu

Register online at: <https://colbycollegejewishlife.regfox.com/project-zug>

Artists to Create Stained Glass Window for TBE

Join us **February 8th-10th** to meet artists **Nancy Katz** and **Mark Liebowitz** who will be creating a beautiful stained glass window for the upcoming synagogue renovation. During this visit, Nancy and Mark would like to get to know our community and explain their designs and process. **Stay on the lookout for more information about how you can get involved in this exciting project!**



Hebrew School

Hebrew School Gets Started January 6th @ 9:30am!

The kiddos of Temple Beth El Hebrew School had a great time at this year's Hanukkah Party! Congratulations to Josie for winning the Second Annual Mench Madness Tournament and thank you to all for joining us in a wonderful night of food, singing, and a fabulous Hanukkah play. We look forward to seeing everyone back at Hebrew School in January.

Next Teen Event

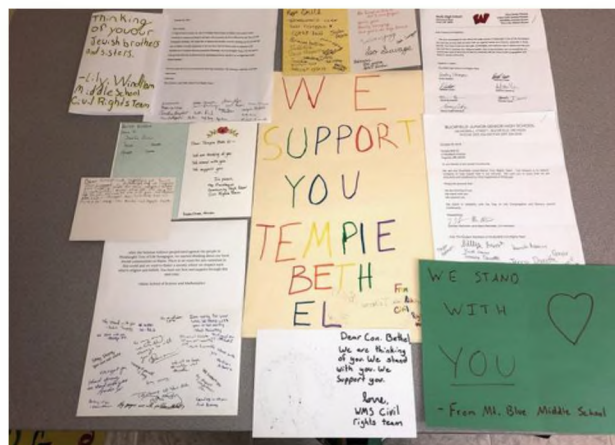
Sunday, February
10th at 12:30pm

Stay tuned for more
information!



Hebrew School Schedule

9:30 am on Sunday, January 6, 13, 20, & 27
9:30am on Sunday, February 3, 10, & 24
NO HEBREW SCHOOL ON FEBRUARY 17!



Donations

Capital Campaign 2019

- Emily & Ethan Bessey
- Sarah & Mike Drickey
- Seth Greene
- Lila Solomon & Tim Gagne
- Thea & Chris Zinck



Rabbi Discretionary Fund

- Kate McLinn

Honor

- Sarah & Samuel Goos in honor of Charlotte and Julius Goos
- Paul Linet in appreciation of Rabbi Asch
- Isabelle Cohen Johnson in honor of the Joseph family for their act of kindness

Yahrzeit/Memorials

- Rabbi Erica & Chris Myers Asch in memory of Robert P. Myers
- Li'el Boudreau in memory of Arlene Fine
- Richard Dana in memory of Leonora Dana
- Patricia & Allen Davis in memory of Alexander Davis
- Patricia & Allen Davis in memory of Kate Mattin
- Sarah & Mike Drickey in memory of Dorothy Quint Drickey
- Andrea & Em Freed in memory of Murray M. Freed
- Ellen Freed & Carol Barlow in memory of Murray M. Freed
- Ellen Freed & Carol Barlow in memory of Harriet Katz
- Joan & Lowell Freiman in memory of Beatrice Freiman
- Anya & Allen Goldey in memory of Beatrice Freiman
- Ellen Bader Kandel & Laurence Bader in memory of Dorothy Bader
- Jacqueline & Roy Littlefield in memory of Harriet Katz
- Yale Marienhoff in memory of Bernard Marienhoff
- Susan & Chris Marshall in memory of Rosemary Marshall
- James Montell in memory of Abraham Goldberg
- James Montell in memory of Faye Goldberg Montell
- James Montell in memory of Hayden Goldberg
- Susan & David Offer in memory of Harriet Katz
- Albert Rudoff in memory of Sylvia Rudoff
- Deb & Syd Sewall in memory of Harriet Katz
- Beth & Steven Shapiro in memory of Daniel Bulba
- Beth & Steven Shapiro in memory of Eli Bulba
- Beth & Steven Shapiro in memory of Faye Goldberg Montell
- Jeri Weisberger Stevens & Douglas Stevens in memory of Phyllis Weisberger
- Gail & Gary Weiss in memory of Natalie Cohen
- Gail & Gary Weiss in memory of Max Cohen

Making a donation to Temple Beth El is a special way to honor family and friends.

Terumah

This fund includes the former General Fund and Dues and covers all temple operating expenses.

Building Fund

This fund is for major repair and rebuilding of our facilities.

Rabbi's Discretionary Fund

This fund helps Rabbi Asch meet special needs in the community.

Yahrzeit/Memorials/Honoraria

These contributions are made in memory or honor of family and friends.

Memorial Plaques

Remember a loved one with a memorial plaque in the synagogue. Donation: \$250

Payment due at time of order.

Tree of Life

Acknowledge a life milestone in a special way by adding a personalized, inscribed leaf to the Tree. Donation: \$36.

Payment due at time of order.

Please make checks payable to Temple Beth El. Indicate the fund to which you want to contribute and mail to TBE, Box 871, Augusta, ME 04332. Undesignated checks will go to the General Fund. *Temple Beth El accepts Visa & Mastercard. Please contact the office with any questions.*

Temple Beth El

Phone 207-622-7450
 Rabbi Erica Asch 207-242-9792
 Email: bethelaugusta@gmail.com

President

Chuck Cohen

Vice President

Emily Bessey

Immediate Past President

Anya Goldey

Treasurer

Hildie Lipson

Secretary

Judith Plano

Board of Directors

Jerry Bley, J. Richardson
 Collins, Mike Drickey, Richard
 Fein, Richard Goldman, Nancy
 Kelly, Fran Rudoff, Lila
 Solomon, Chris Zinck

Honorary Directors

Peter Bickerman
 Julius Goos
 Sumner Lipman

Committee Chairs:

Emily Bley (Hebrew School)
 Judith Plano (Yad B'Yad)
 Fran Rudoff (Fundraising)

January Yahrzeits

January 2 Edmond Betit
 Myron Shulman
 January 3 Leoni Adler
 Evelyn Apogi Bickerman
 Hanni Daks
 January 4 Blanche Bishoff
 Solomon Cohen
 Philmore Schiff
 January 5 Rose Michelson
 Mollie Smilowitz
 January 6 Ted Beatty
 January 8 Leo David Bessey
 William Woolner
 January 10 Jarvey Gilbert
 Mollie Sacks
 January 13 Theo Leibman
 January 14 Jacques Grunblatt
 January 15 James Carvutto
 Jane Bridgman Koopman
 January 16 Leonard Fels
 January 17 Ruth McLinn
 January 18 Jacob Dana
 Elkan C. Offer
 Orbie Lee Ortell
 January 20 Thelma Gross
 January 21 Richele Amy Gross
 January 22 Rose Eckert

February Yahrzeits

February 1 Ezra David Bessey
 February 2 Betty Franzel
 Henry Thielman
 February 3 Sydney Cash
 Morey Lerman
 February 4 Leah Deborah Freed
 February 5 Yetta Marienhoff
 February 6 Sidney J. Sussman
 February 7 Odell Kominers
 February 8 Erik Eckert
 February 10 Hyman Cohen
 Robert Perlberg
 February 11 Lauraine Goodrich
 February 13 Laura Goldstein
 David Spalding
 February 14 Irving Smilowitz
 February 17 Harry M. Slosberg
 February 18 Frederick LaPenna
 February 19 Helen Hannaford
 February 20 Bud Earle
 February 27 Perry Bakaley
 Edwin Aaron Macy

Portland Chevra Kadisha
 Jewish Funeral Home
 471 Deering Ave.
 Portland, ME 04103
 207.774.3733



Refuah Sh'lemah
(Get Well) to:

Julius Goos
 Michael Libby
 Judy Plano