



## The Bet Ha'am Weekly Email

### Words of Torah

Rabbi Saks is away for a three-month sabbatical. While he is away, we will be sharing Words of Torah from various Jewish educational resources. This week's Words of Torah about Parashat Pinchas (Numbers 25:10 - 30:1), *What Makes a Family?*, come from Rabbi Abby Sosland via [myjewishlearning.com](http://myjewishlearning.com).



#### **What Makes a Family?**

*The Torah offers several models of familial connection that depart from the standard model.*

The most common word in Parashat Pinchas points to one of its central themes: family. The Hebrew word for family, mishpacha, appears in this Torah portion over 90 times.

What, exactly, makes a family? At first glance, Parashat Pinchas certainly seems to know the answer. The portion opens with a pretty unequivocal statement of who qualifies. At the start of the reading, Pinchas is rewarded for passionately defending God by killing an Israelite man who had transgressed with a Midianite woman. The Torah makes clear that the couple had crossed a familial boundary.

The name of the Israelite who was killed, the one who was killed with the Midianite woman, was Zimri son of Salu, chieftain of a Simeonite ancestral house. The name of the Midianite woman who was killed was Cozbi daughter of Zur; he was the tribal head of an ancestral house in Midian. Numbers 25:14-15.

We learn nothing else about these two people except their familial identities. The message seems almost self-evident: crossing traditional family lines is dangerous. It leads to violence, rupture, and plague.

As if to underline this point, the text follows this story with another reminder of the centrality of family to our people. As soon as the plague is over and God's rage has subsided, Moses and Eleazar are commanded to take a census of the people, each grouping defined by its ancestor and its clan — in other words, by its family. As the census unfolds, we learn of the many Israelite families traveling in the desert. In the next two chapters, mishpacha is repeated again and again, sometimes up to four times in a single verse.

What is this repetition trying to teach us?  
Continue reading [here](#).

## Join Us In Person!

- Registration is no longer required for in-person sanctuary services - just show up!
- Everyone must wear a mask at all times while attending services as we will be singing.

- It is our hope to hold one in-person service at Bet Ha'am every weekend. We can't wait to see you there!
- All services will continue to be live-streamed on Zoom. See below details.

Questions can be addressed to Sylvia Most at [sylviamost@gmail.com](mailto:sylviamost@gmail.com).

## Want to Join Us Via Zoom?

All services will continue to be live-streamed via Zoom. In addition, Torah Study will continue meeting via Zoom, most likely throughout the summer.

Want to join us via Zoom? Just click on the links provided below. **Please note: Zoom links will no longer be emailed on Fridays, but they will always be provided in the Thursday congregational emails.** It's that easy!

Join the **Friday Night Shabbat Worship** service, [here](#).

Join the **Torah Study** session, [here](#).

Join the **Shabbat Morning Worship** service [here](#).

Join the **Wednesday Morning Minyan** [here](#).

## Worship Schedule

### Friday, July 2 Shabbat Worship, 7:30 PM (via Zoom)

Thank you to Sharon Newman for leading our worship service via Zoom. Thank you to Diane Newman for lighting our Shabbat candles and making our announcements.

Thank you to **Garth Ebner** for being our Shabbat guest speaker on Friday night. Garth's talk will be called "Pinchas, Elijah, and the Conversion Experience".



*Garth Ebner has been a member of Bet Ha'am since 2017. He finished his conversion to Judaism in February of this year. His d'var Torah will be about his conversion studies and how the Kabbalah influenced his spiritual journey and Jewish practice.*

*Garth lives in Auburn with his fiancée Jenna and their two cats, Diana and Gandalf. In his spare time he likes to read, play Animal Crossing, and cultivate edible mushrooms."*

Read more about our service and our siddur (prayer book) [here](#).

### Saturday, July 3 Torah Study, 9:00 AM

Torah study using *The Mussar Torah Commentary* continues--but you don't need to own a copy. Read more [here](#), under the "Torah Study" heading.

Thank you to Rachel Posner for leading Torah Study this week.

### Saturday, July 3 Shabbat Morning Worship, 10:30 AM (in the Sanctuary)

Thank you to Daniel Oppenheim for leading our worship service in the Sanctuary. Thank you to Robert Morrison for reading Torah.

Let's enjoy a Kiddush lunch together! Please bring your own brown bag lunch and carry-away your trash.

Read more about our service and our siddur (prayer book) [here](#).

---

**Wednesday, July 7**  
**Morning Minyan 7:30 AM**

Thank you to Daniel Oppenheim for leading Morning Minyan.

Join the **Wednesday Morning Minyan** [here](#).

---

**Contemplative Worship Service - Always Available on the Bet Ha'am Website!**

This contemplative worship service offers an opportunity for you to delve deeper into your own spiritual practice and open the pathways to God that are available to you. By making this available, we hope that you will access it anytime you need to re-center yourself or reopen those pathways to God.



You can watch the service [here](#).  
Follow along with the prayer book [here](#).

## Annual Outdoor Shabbat at Fort Williams



**Friday, July 9**  
**Family Shabbat Service and Picnic, 5:00 PM**  
**Fort Williams Park in Cape Elizabeth**

The evening will begin with a festive dinner. Then, the sights and sounds of summer will enhance our worship.

**Please bring your own brown bag dinner and carry-away your trash.**

In the event of mild inclement weather, we will proceed with our service and picnic at Fort Williams. In the event of severe inclement weather (driving down rain/thunder/lightning), we will cancel our service and picnic for the evening. We will make a final weather determination at 2:00 PM on Friday. If you are unsure, please check the Bet Ha'am outgoing phone message after 2:00 PM for updates.

The **Picnic Shelter** is a covered structure with tables and a view of the lighthouse. Enter the park through the main entrance on Shore Road. Follow the road up the hill and over the other side to the stop sign. Turn right. The entrance to the Picnic Shelter parking lot will be on the right. The Picnic Shelter is located on the hill above the parking lot.

**Pay and Display parking fees are in effect in most parking lots April 1 – November 15, 8:00 AM – 5:00 PM. There is no charge to park in the Overflow lot.**

## Service Leaders Needed!!!

### Service Leaders Needed!

With Rabbi Saks on sabbatical, we need service leaders for July and the first half of August. If you would like to lead or co-lead, these are the dates available for Zoom and in-person services.:

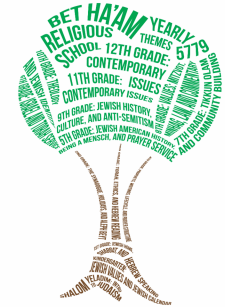
Saturday, July 10, 10:30 AM (Zoom)  
Saturday, July 17, 10:30 AM (Sanctuary)  
Friday, July 23, 7:30 PM (Zoom)  
Friday, July 30, 7:30 PM (Zoom)  
Saturday, August 7, 10:30 AM (TBD)  
Saturday, August 14, 10:30 AM (TBD)



If interested, willing and able, please contact Melissa Montefel at [missyjo314@hotmail.com](mailto:missyjo314@hotmail.com) or call/text 207-939-8568. Thank you!!

## Religious School on Zoom

If you are interested in enrolling a child or becoming a volunteer teacher in the religious school, please email Sam at [sam@bethaam.org](mailto:sam@bethaam.org)



## Calling All Congregants

Calling All Congregants...

Bet Ha'am's *Chadashot* is looking for articles from you about your passions.

- Are you interested in baking, cooking, grilling, anything to do with food? Tell us about it along with a favorite recipe.
- Are you passionate about books - reading at the beach, getting in a chapter before bed, listening in the car, curled up in your comfy chair? Write a review of one of your favorites.
- Do you have a guilty pleasure? What have you binge watched during a he pandemic?
- How about art? Do you make it or appreciate it?

The list of possibilities is endless, and we would like to broaden the base of both our readers and contributors. The *Chadashot* is published bimonthly. The July/August issue comes out soon.

For more information, please email Donna Landau, [dmlandau@hotmail.com](mailto:dmlandau@hotmail.com), or Molly Edelstein, [molly.edelstein@gmail.com](mailto:molly.edelstein@gmail.com).

## Solar Energy Fundraiser

### Support Local Maine Solar, Lower Your CMP Bill and Raise Money for Bet Ha'am

Bet Ha'am was recently contacted about a new fundraising initiative involving congregants who may be interested in community solar. PowerMarket is an operator of multiple community solar energy farms on the east coast including one located in Baldwin, Maine that is currently looking for "subscribers." Subscribers are self-designated CMP customers who wish to buy a portion of their electricity from a community solar farm. The electricity is sold at a discount and produced with a lower carbon footprint.



The initiative presented provides that PowerMarket and Darrell Cooper of Energy Audits Ltd. will donate \$150 to Bet Ha'am for each subscriber who signs up using the promo code "Bet Ha'am." There is no upfront cost to sign up, subscribers typically save about 10% on their CMP bill, and they can cancel at any time on 60 days' notice.

You can obtain more information, and if interested become a subscriber through the PowerMarket/Baldwin Community Solar project website at:

<https://account.powermarket.io/bethaam.html>.

If you have questions about the donation to Bet Ha'am, please contact Mark Stone at [lmstone@lmstone.com](mailto:lmstone@lmstone.com).

## Ongoing at Bet Ha'am

### Shabbat Candle Lighting

Please consider signing up to be a candle lighter at an upcoming Zoom Friday night service. You may choose to do this in memory of a loved one for whom you're observing yahrzeit, in honor of a celebration in your life, or just because you want to engage in this ritual. You can read more from Rabbi Saks [here](#); learn the candle lighting blessing [here](#) (on track 420); and find the words [here](#).



[Candle Lighting Sign-Up](#)

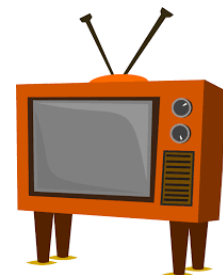
### B'Yachad | Together

Come relax and talk virtually with your Bet Ha'am community before Friday Shabbat services! We will meet every Friday except the second Friday of the month when there is a 6:00 PM Family Shabbat service. [Read more here](#). [Register here](#). Please contact congregant [Alan Davis](#) with questions.



### TV and Movie Discussion Group

Please join congregants Melissa Montefel and Wendy Hayes, co-facilitators, for a discussion group about Jewish-themed movies and shows. The group meets at 7:00 PM for fun, talk, and insights. Please email [Wendy](#) for the login or with questions or suggestions for future movies.



#### July 7: *The Angel*

As his country prepares for war, top Egyptian official Ashraf Marwan makes contact with Israel and wades into a shadowy game of high-stakes espionage. *Available on Netflix.*

#### July 21: *Uncut Gems*

With his debts mounting and angry collectors closing in, a fast-talking New York City jeweler risks everything in hopes of staying afloat and alive. *Available on Netflix.*

### Curbside Library Borrowing

Although the building remains closed, you may borrow a book from our wonderful library using curbside pick up. Read more on our [library page](#).



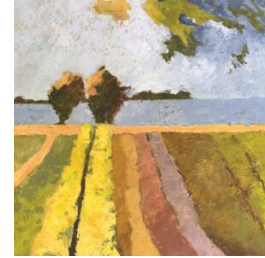
## So Much Going on in Our Community!

We are fortunate to be in a community where there is so much going on Jewishly that we cannot possibly list all of the happenings here. Please check out the websites listed below for all kinds of activities – movement, art, spirituality, books, movies, Jewish education, and more. Bet Ha'am often co-sponsors programs with these community leaders.

### Three New Exhibitions July 1 - August 13

Opening reception: Thursday, July 1, 5:00-7:00 PM  
*Maine Jewish Museum, 267 Congress Street, Portland*

- Forces of Nature* by Janis Goodman
- A Sense of Place: Landscapes Near & Far* by Toby Gordon
- Paris Street Dance* by Richard Wexler



Hours: Sunday through Friday 12:00-4:00 PM, closed Saturdays  
Learn more [here](#).

[Jewish  
Community  
Alliance of  
Southern Maine](#)

[Center for Small  
Town Jewish  
Life](#)

[Southern Maine  
Jewish  
Cemetery  
Association](#)

[Maine Jewish  
Museum](#)

[Levey Day  
School](#)

[Maine Jewish  
Film Festival](#)

## Donate to Bet Ha'am

Please consider donating in any amount to Congregation Bet Ha'am--with your help, we can close the budget gap! We are grateful for your support.

[Donate Now](#)

Congregation Bet Ha'am | 81 Westbrook Street, South Portland, ME 04106

[Unsubscribe\\_gleckman@mindspring.com](mailto:Unsubscribe_gleckman@mindspring.com)

[Update Profile](#) | [Constant Contact Data Notice](#)

Sent by [karen@bethaam.org](mailto:karen@bethaam.org) powered by



Try email marketing for free today!