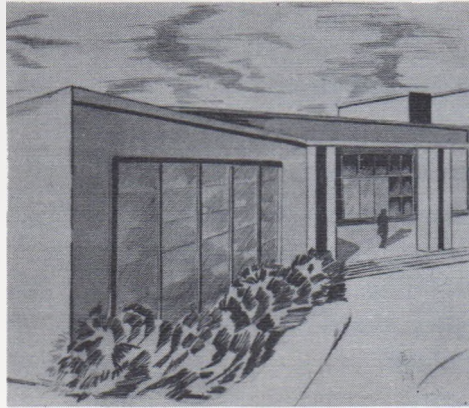


A Poem of Dedication

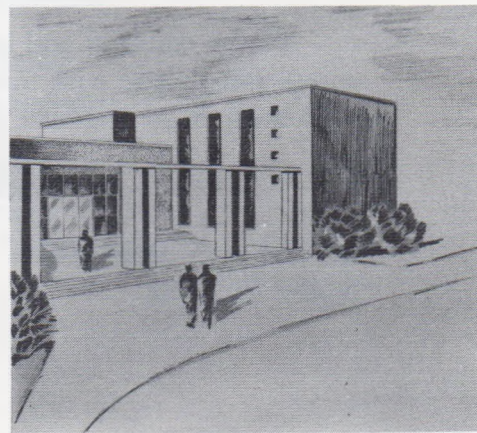


*A corner in this frightened world is ours,
And this temple is our testament
Of faith within that corner. No muezzin
Sings from out a minaret,
Nor rings out any iron tongue
To urge in us this trust. But gently
Lifted on this ledge of Maine
Is a house of God, our testament.*

*Within its walls this temple has
A heritage: of desert wanderers,
Stark prophets, long years with no oasis;
Slavery and bitterness, and anguished voices
Crying out for light. Now in our time
We recapture in this stone-white place
Our ancient wisdom: teach great truths
And hearten men to fight for them.*

*A cloud of darkness may come again.
Men may tear the world apart
And stride across the continents
With iron heels. And ashen faces
May rise to weep that phantom hatreds
Are abroad once more. But this blind fury
Has no strength against our hope,
Which like the phoenix will rise from flame.*

*Rejoice, oh builders, that beauty crowns
A completed work; rejoice that voices
Tuned to prayer and common good
Will fill this temple day by day.
Believe not more in harmonious bricks
And glass, and sweet surrounding greenery
Than in this temple's heart. Therein
Survives our struggle and our peace.*



Drawings by Mary Craven

HAROLD KARL HALPERT



EPHRAIM I. BENNETT, *Rabbi*

"By the grace of the Lord hath this been done; it is marvelous in our eyes. This is the day which the Lord hath made — we will rejoice and be glad on it."

(HALLEL — PRAYER BOOK)

I want to extend my warmest congratulations to all who have participated in the sacred task of building our Temple; to the founders of Temple Beth El, for the boldness and daring of their vision; to the officers and leaders of Beth El, for the sincerity and meticulous care which they brought to the planning and execution of each detail of our building; to the membership of our Temple, for their encouraging response and unwavering support of this project. The result of this superb combination of vision, planning, and enthusiasm is a synagogue structure which matches, in the simplicity of its design and purity of its lines, the simplicity and purity of the eternal truths and values which it symbolizes.

In this Hour of Dedication, we dedicate not only our Temple but ourselves. It is through the act of self-dedication that we give meaning and purpose, vitality and significance, to this work of our hands. Our Temple is but the means to enable us to express more clearly our finest aspirations, our noblest thoughts, our loftiest ideals and, above all, our desire and determination to live our lives at the highest possible level.

I pray that we be granted the strength to fulfill the promise of this hour. May our Temple never fail us; may we never fail it.

*Original Board of Directors and
Associate Directors 1947-1948*

Benjamin Lazarus
President

Harold K. Halpert
Vice-President

Irving Stein
Treasurer

Arnold Potter
Secretary

Edward J. Berman
Lewis Bernstein
Louis Bernstein
Dr. David Berlowitz
Dr. B. James Cohen
David Ebenstein
Mrs. Julius Elowitch

Mrs. Michael Field
Benjamin E. Finn
Mrs. Norman I. Godfrey
Mrs. David J. Lavin
Benjamin Lewis
Mrs. Maurice H. Packet
Jacob H. Potter

Myer H. Sacknoff
Irving E. Small
James Stein
Sidney W. Wernick
Lester M. Willis
Dr. Benjamin Zolov
Carl P. Zolov



THE FIRST OFFICERS DISCUSS
THE BUILDING PROGRAM

President's Message

Judaism is an outlook on life, and that Jews should know and understand Judaism is axiomatic. Yet, such has been the tone and content of American Jewish life, that Judaism has fast been approaching the status of a stranger in its own household. We were becoming social Jews, lacking spiritual conception and devoid of religious content.

Reaction against these negative influences caused us in Portland to seek a remedy in Conservative Judaism. In three short years we have come from a barren room to the magnificent Temple we are now dedicating. We have rekindled in our souls the spark of Jewish consciousness, which heretofore had been shining all too dimly. It has given us the incentive to teach ourselves and our children the glory of our heritage, so that we as Jews, both culturally



EDWARD J. BERMAN

and spiritually, can live among our fellow men honorably and with befitting dignity.



BOARD OF DIRECTORS, TEMPLE BETH EL — 1950-1951