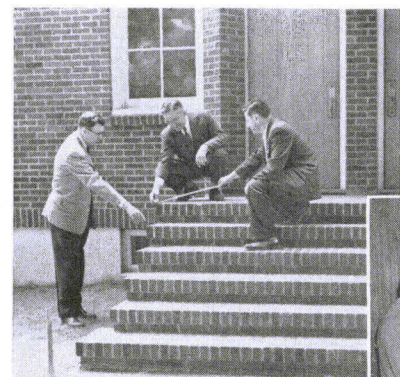


## THE CONSTRUCTION OF TEMPLE ISRAEL

On October 10, 1945 a parcel of land 50 x 125 feet was purchased on Center Street by a group representing the Congregation Beth Israel. The purpose in this was in anticipation of the growth of the Jewish Community in Old Town and its eventual need of a more desirable spiritual and social center. After a lapse of seven years, during which time varying sets of plans were considered, it was finally decided to adopt the structure which is now being dedicated.



Among the plans considered by the Planning Committee, Harold Hoos, Israel Cutler, Abe Podolsky, Ben Sklar and Howard Gewertz, were modern edifices and traditional structures, the latter being adopted due to its functional possibilities. Bids were issued immediately following the decision on a set of plans, and finally in July 1953 the ground breaking ceremony took place. President S. A. Goldsmith officiated at this event with A. J. Goldsmith and Louis Rapaport turning the first spadeful of earth. Benedictions were read by Rabbi Milton Elefant, Rev. Charles Biglin, Rev. Ernest Flood and Rev. Raymond Probst. Hereafter the entire community showed its great interest in the construction by continually consulting with the construction committee, Abe Podolsky, Alexander Cutler and Howard Gewertz.

Throughout the following months the construction went on in an orderly fashion. Although the usual number of minor problems were encountered, the construction committee capably coped with the situation. Once the building was closed in, the contract work was completed. Then began the major problems associated with

interior work. Once again meeting after meeting was held in an attempt to create an appropriately pleasant interior. At this time such topics as type of wall, type of paint, adequate heat and light and other problems were discussed and settled.

After nine months of construction the building was finally suitable for use although not fully appointed.

Through the efforts of the Sisterhood, complete kitchen facilities were installed and banquet needs for 125 are now available. The entrance lobby, designed with an adjoining coat room, measures 10 x 30 feet. The synagogue prayer room is amply situated in an area 30 x 40 feet and has a seating capacity of 125. Centered between the storage area and the kitchen at the lower level is the community social room covering an area of 30 x 30 feet. The downstairs area is finished in painted cement block and treated plywood and the upper level in striated plywood.

As our new Temple is dedicated, we experience an indescribable thrill. The indomitable will of the congregation, the generosity of its individuals and the spirit of working together in a common cause have brought us all to this day of rejoicing.

Our dream has been realized!



*This page dedicated to  
the TEMPLE ISRAEL Dedication Book*

*by the  
H. M. GOLDSMITH STORE*

*Old Town*

---

DRINK GRANT'S MILK

GRANT'S DAIRY

Union St., Bangor

---

Everyone knows . . . .

THE STARS ARE ON

**WABI**

910 KC

ABC - MUTUAL -  
YANKEE Networks

NOW! 24 HOURS A DAY!

**WABI-TV**

CHANNEL 5

NBC - ABC - DUMONT  
Networks

18 HOURS DAILY -  
7 A.M. -- 1 A.M.

**TWO of the nation's GREAT stations**

---